



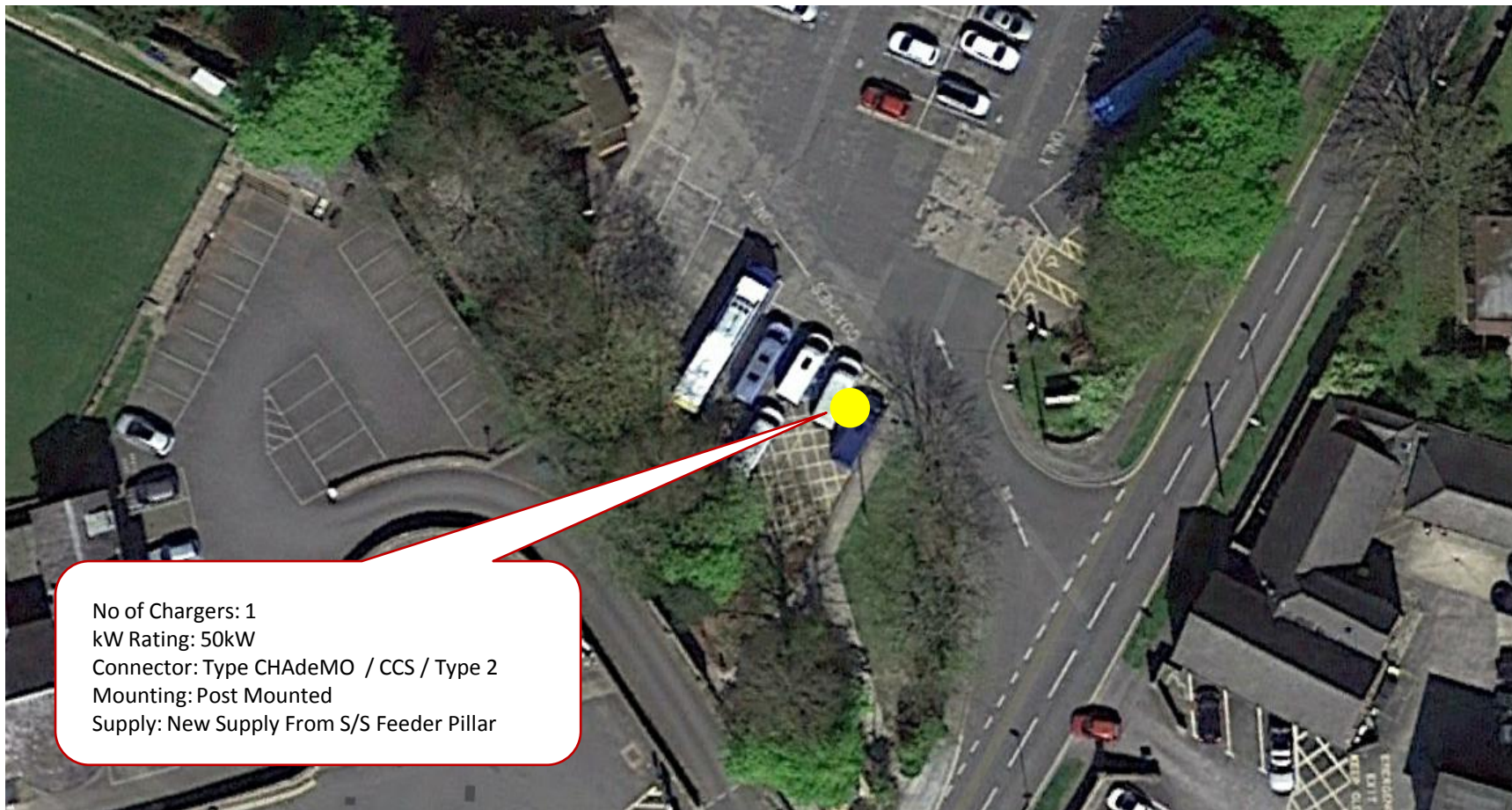
Annex E



Winchester
City Council

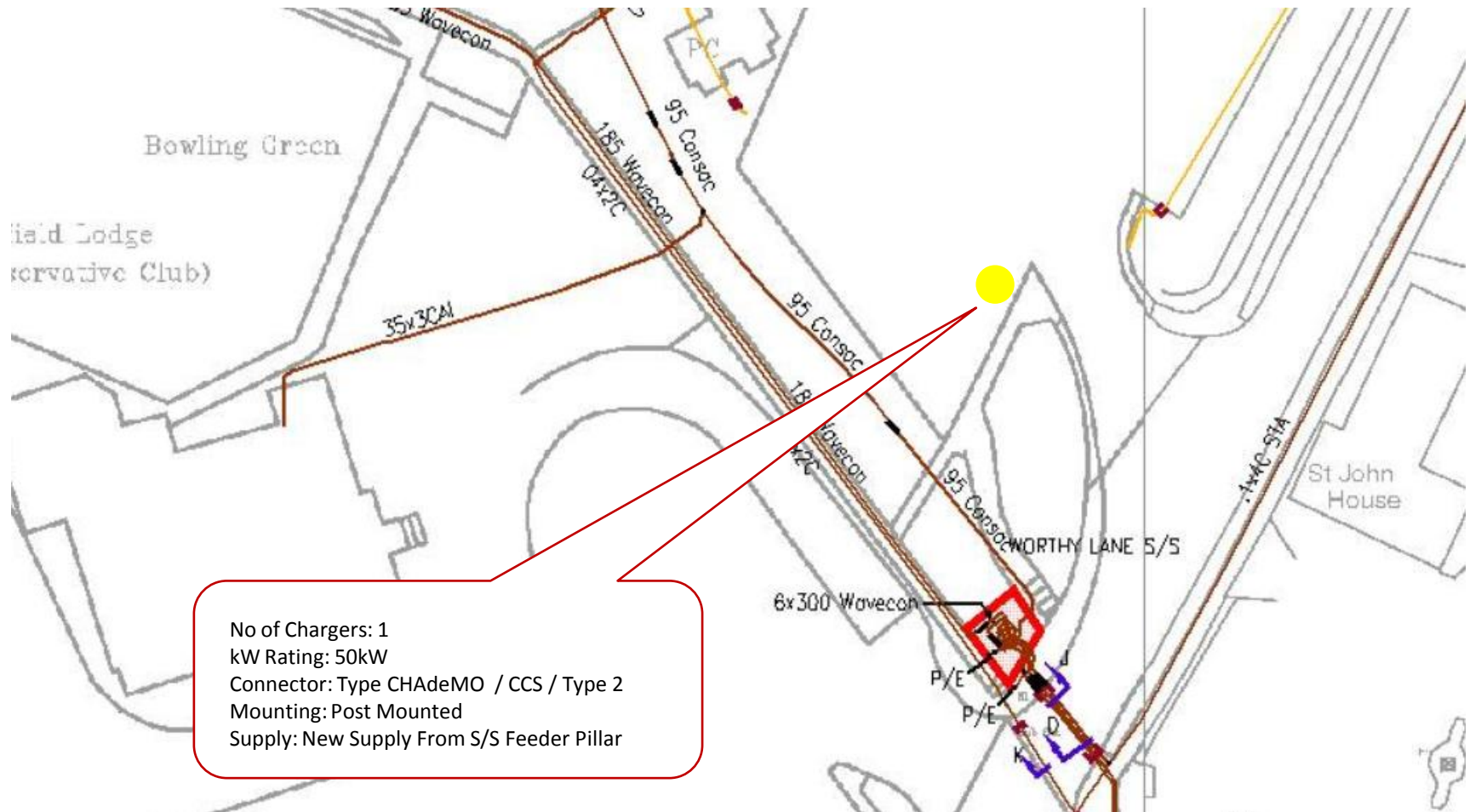
Electrical Infrastructure and Charging Locations

Winchester Coach Park (Site Ref 1)



No of Chargers: 1
kW Rating: 50kW
Connector: Type CHAdeMO / CCS / Type 2
Mounting: Post Mounted
Supply: New Supply From S/S Feeder Pillar

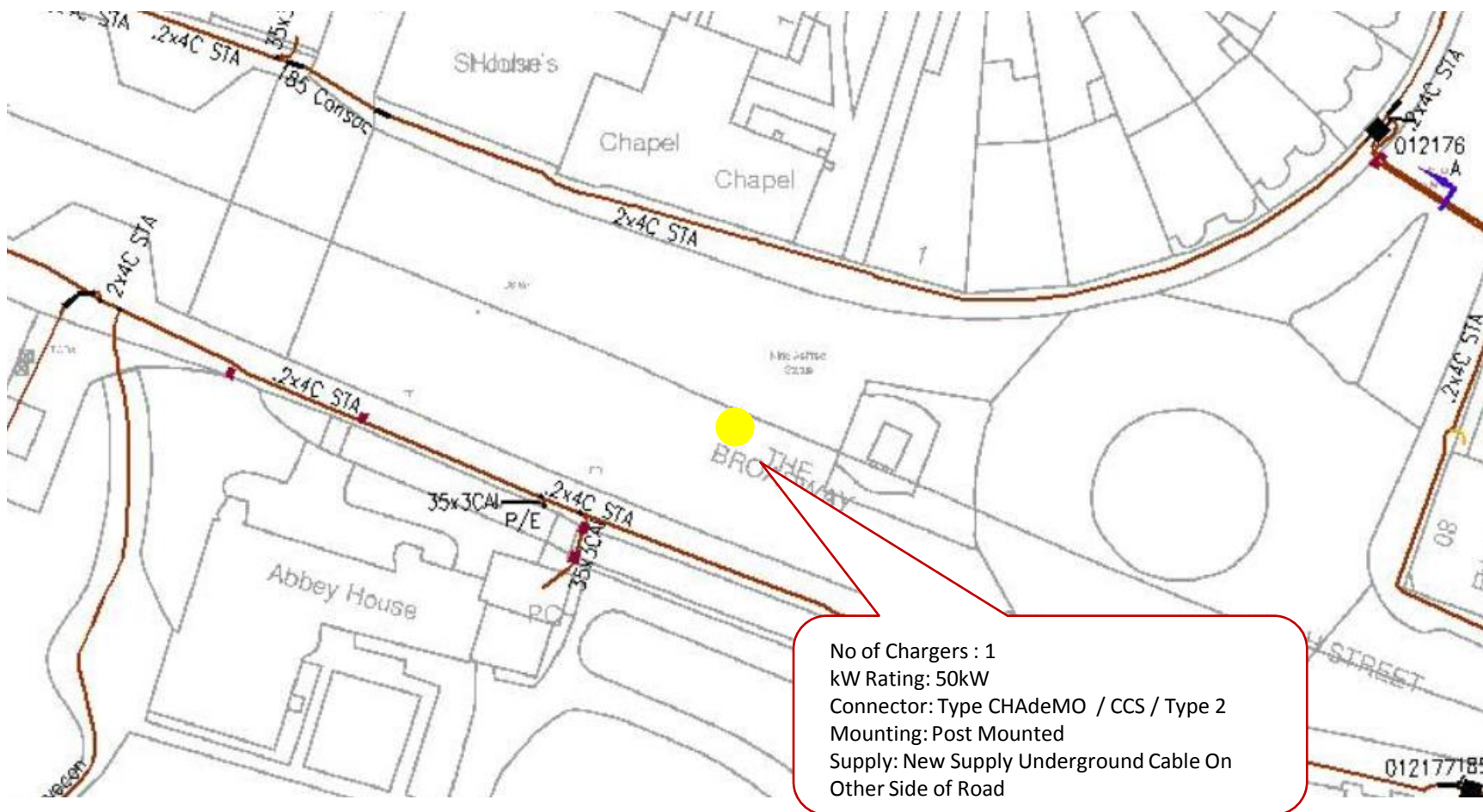
Winchester Coach Park (Site Ref 1)



Winchester Guildhall (Site Ref 2)



Winchester Guildhall (Site Ref 2)



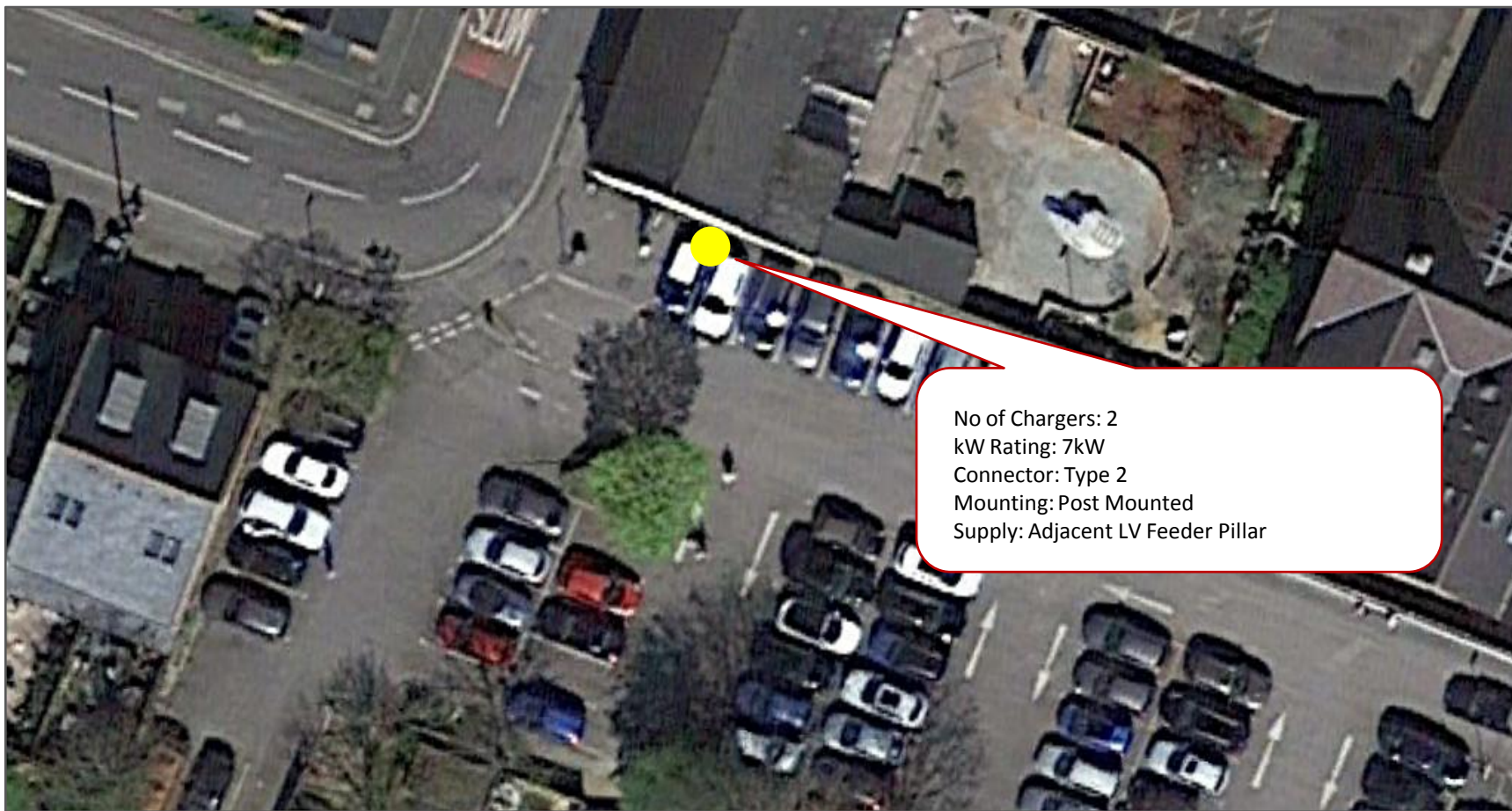


Public Car Parks EV Charging Infrastructure



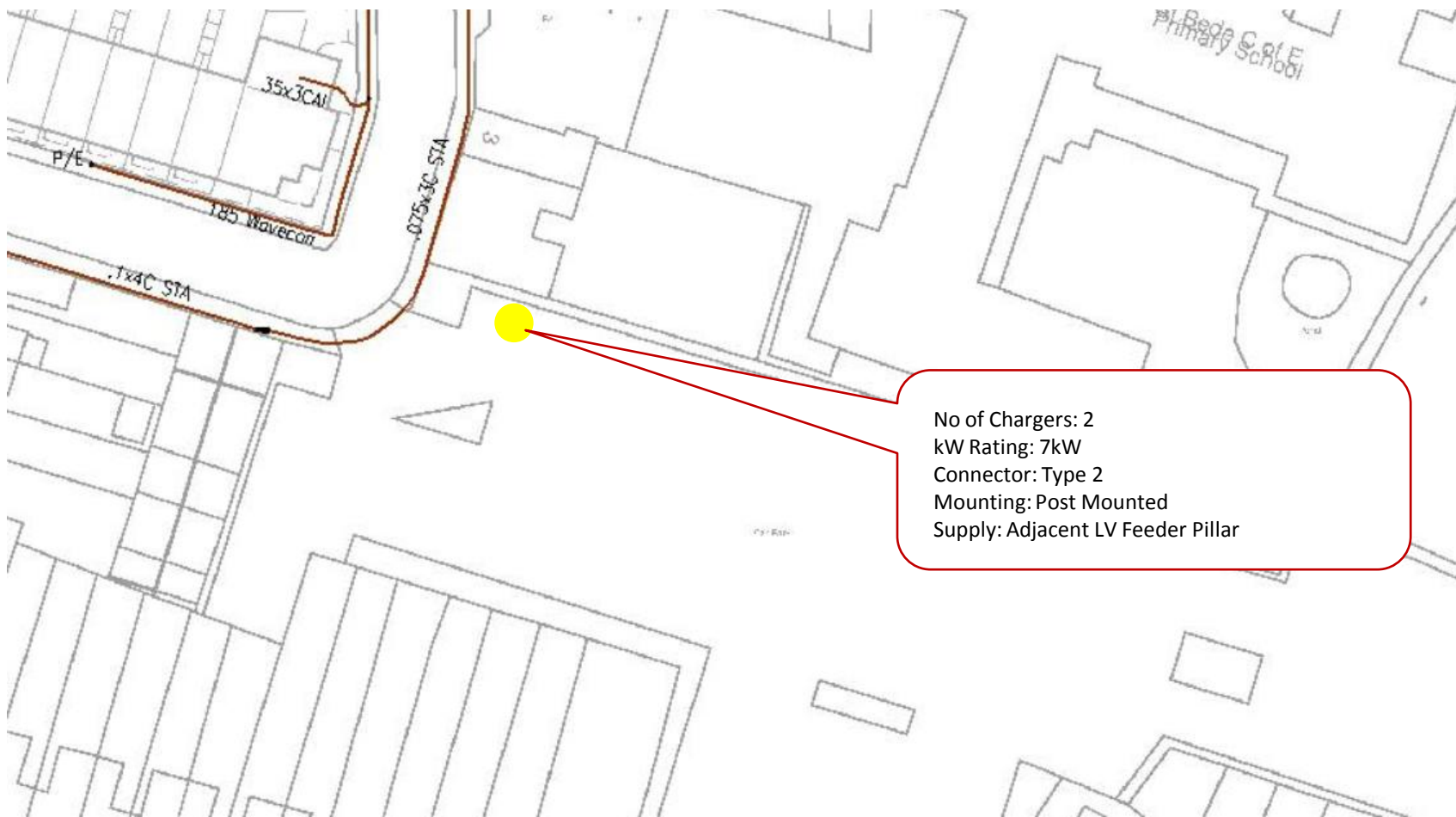
Winchester
City Council

Winchester St Peters Car Park (Site Ref 3)

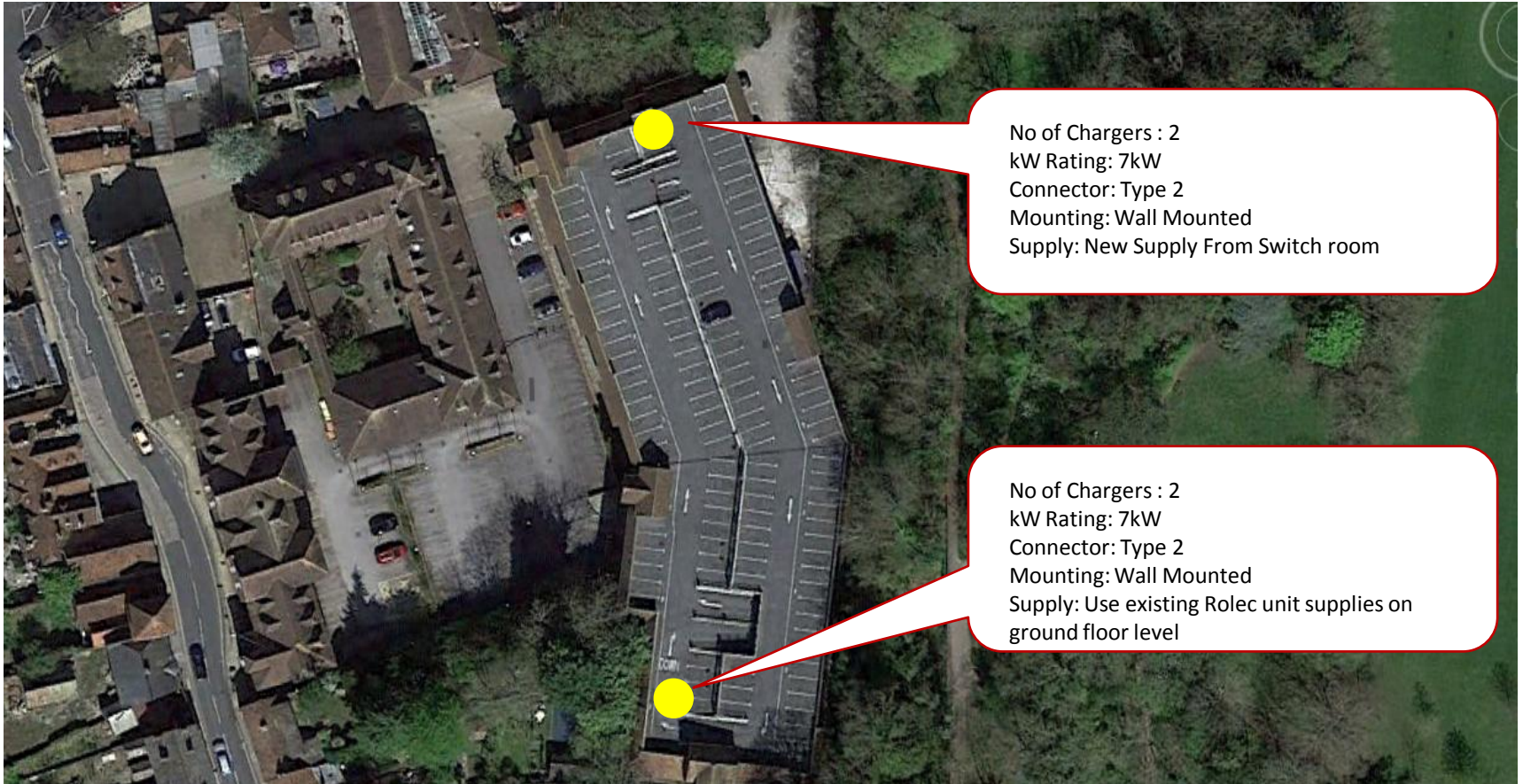


No of Chargers: 2
kW Rating: 7kW
Connector: Type 2
Mounting: Post Mounted
Supply: Adjacent LV Feeder Pillar

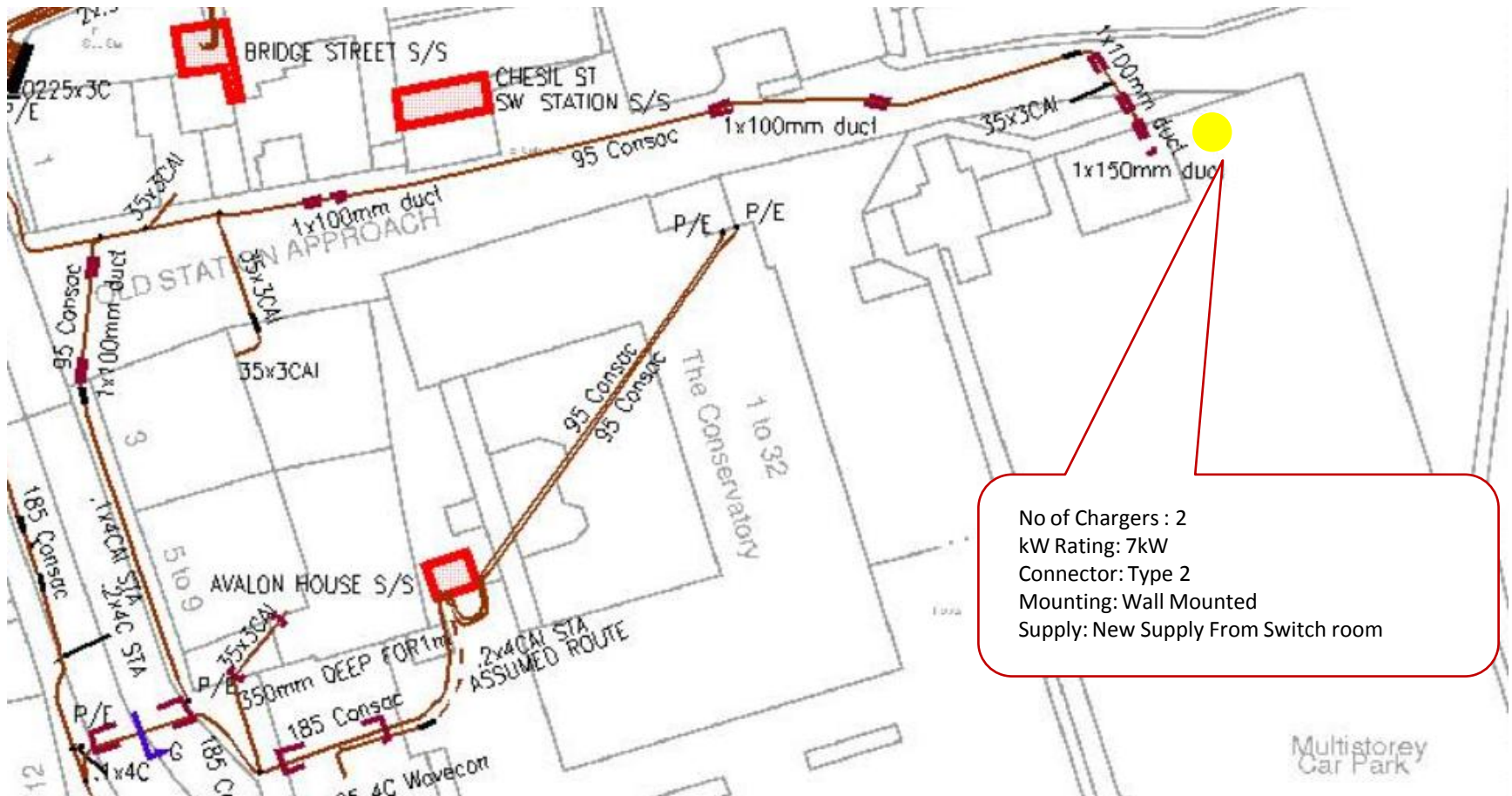
Winchester St Peters Car Park (Site Ref 3)



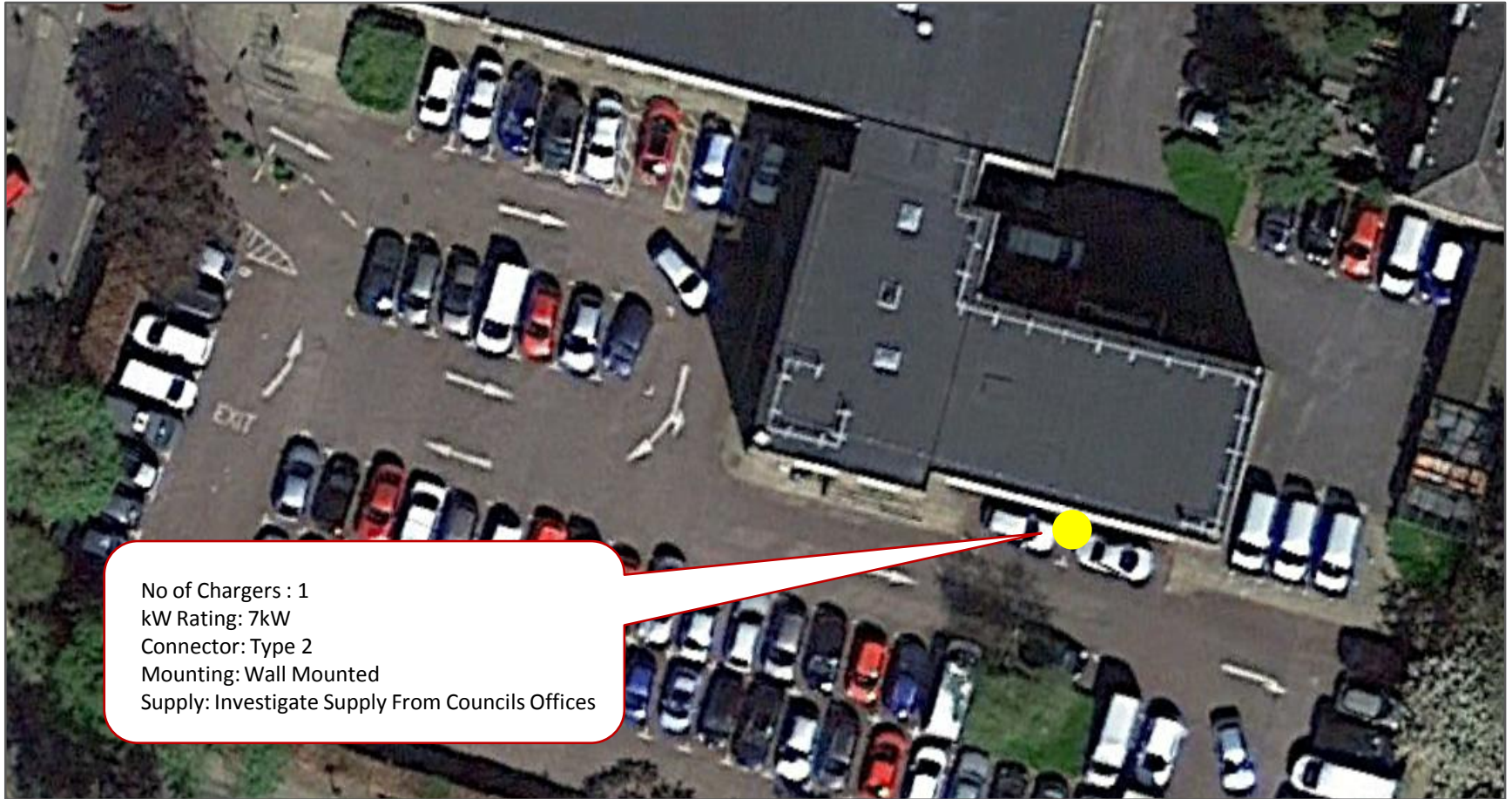
Winchester Chesil Street Car Park (Site Ref 4)



Winchester Chesil Street Car Park (Site Ref 4)

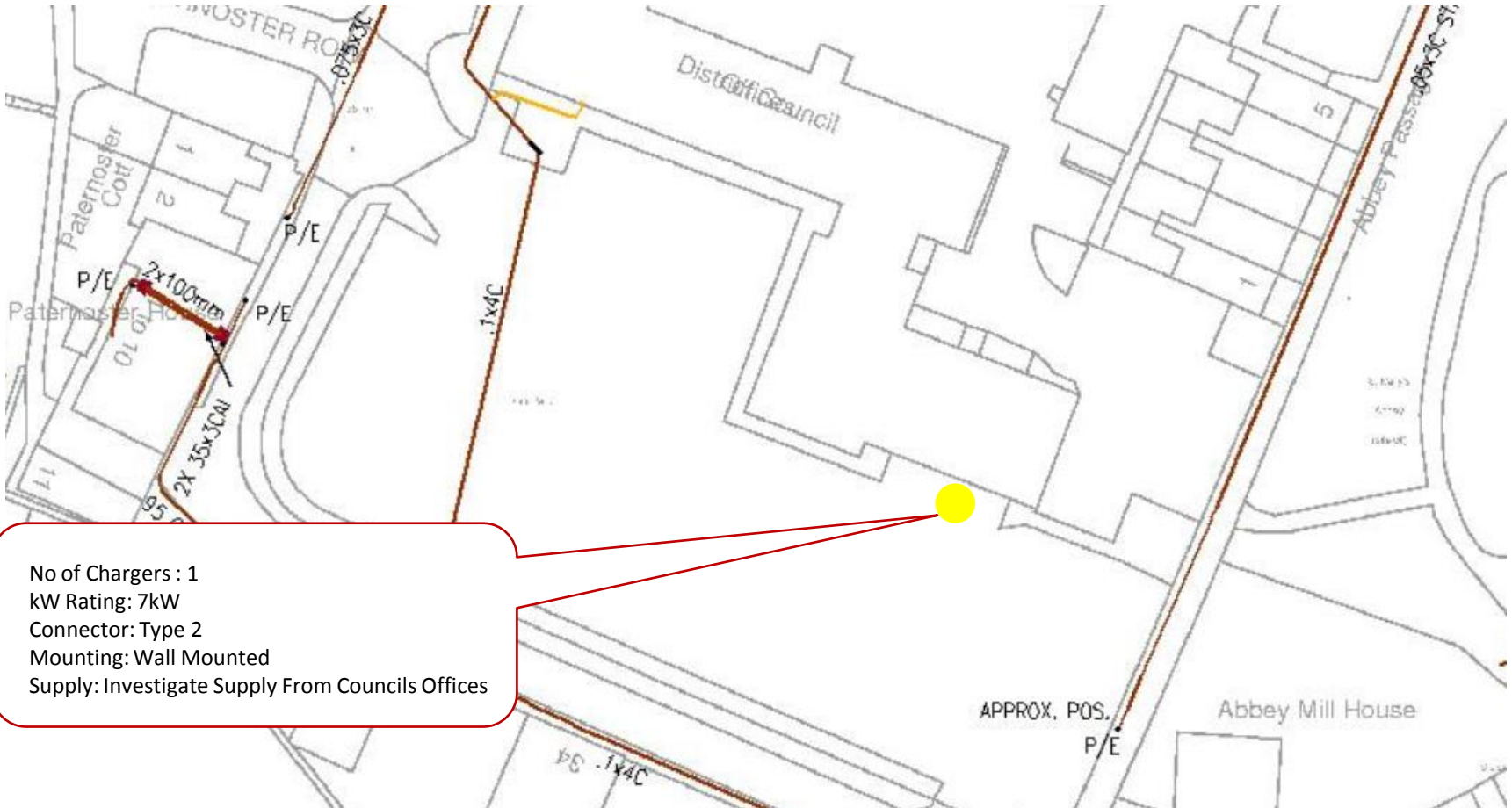


Winchester – Colebrook Street Car Park (Site Ref 5)

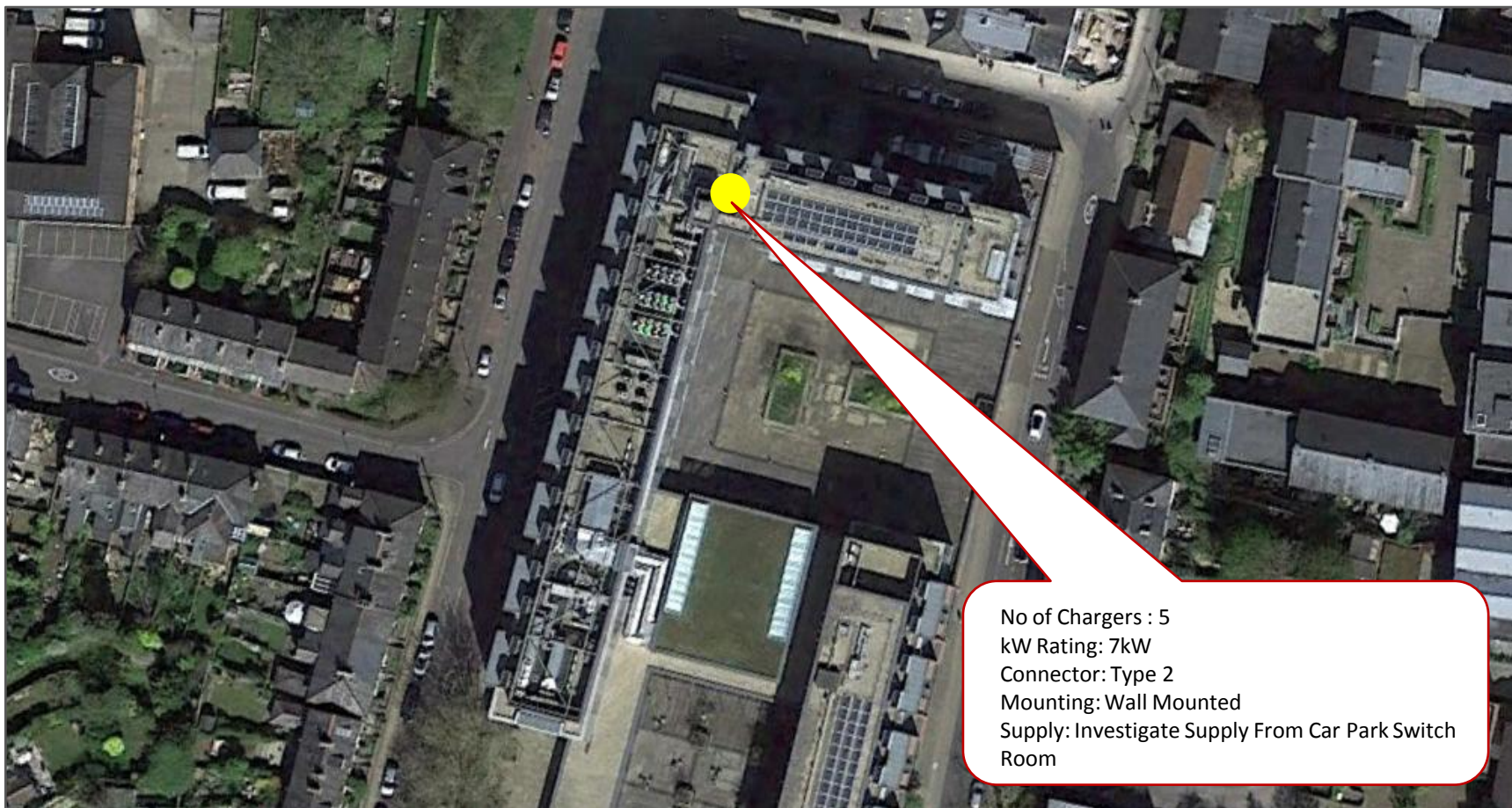


No of Chargers : 1
kW Rating: 7kW
Connector: Type 2
Mounting: Wall Mounted
Supply: Investigate Supply From Councils Offices

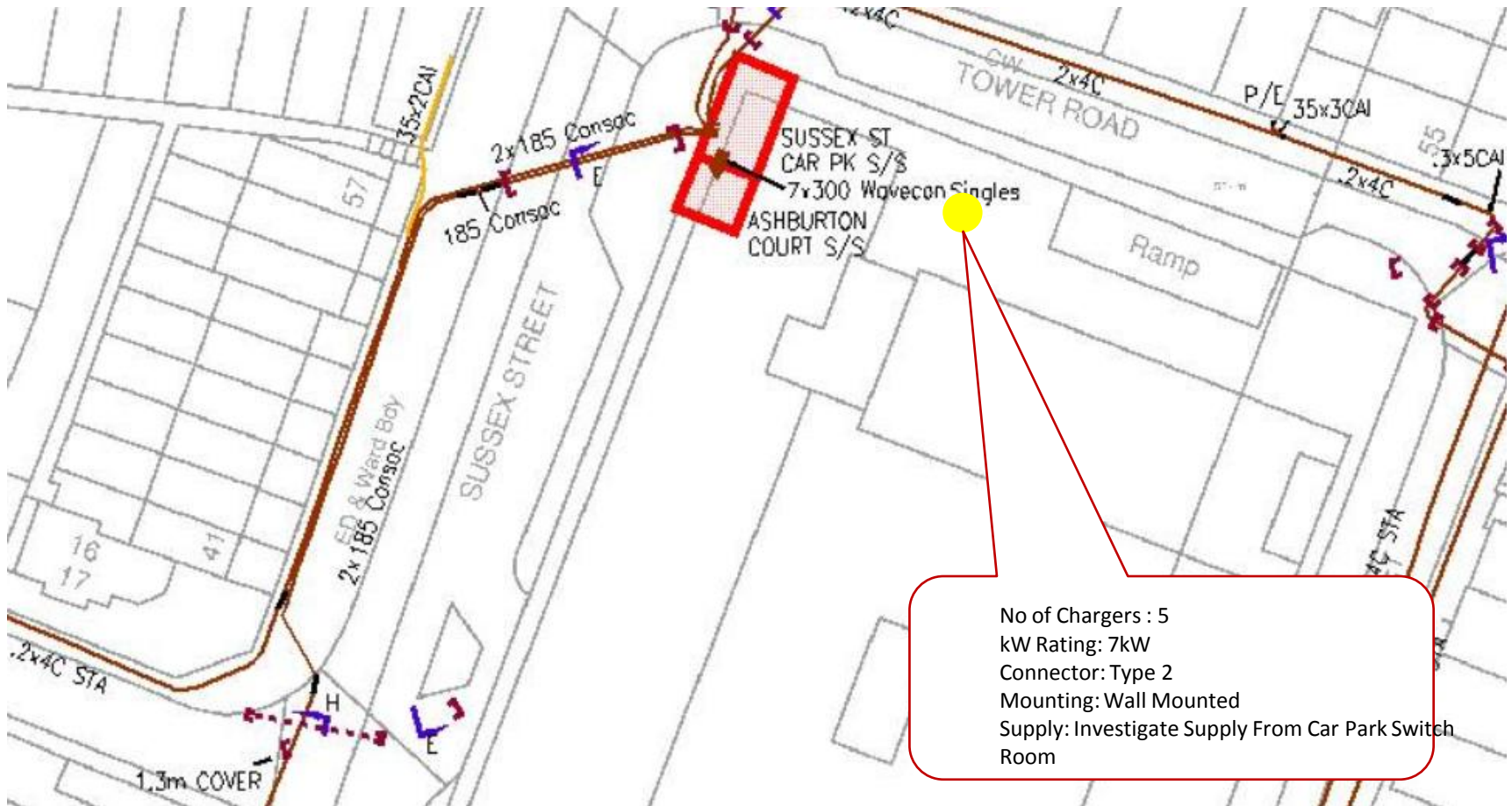
Winchester – Colebrook Street Car Park (Site Ref 5)



Winchester – Tower Street Car Park (Site Ref 6)



Winchester – Tower Street Car Park (Site Ref 6)

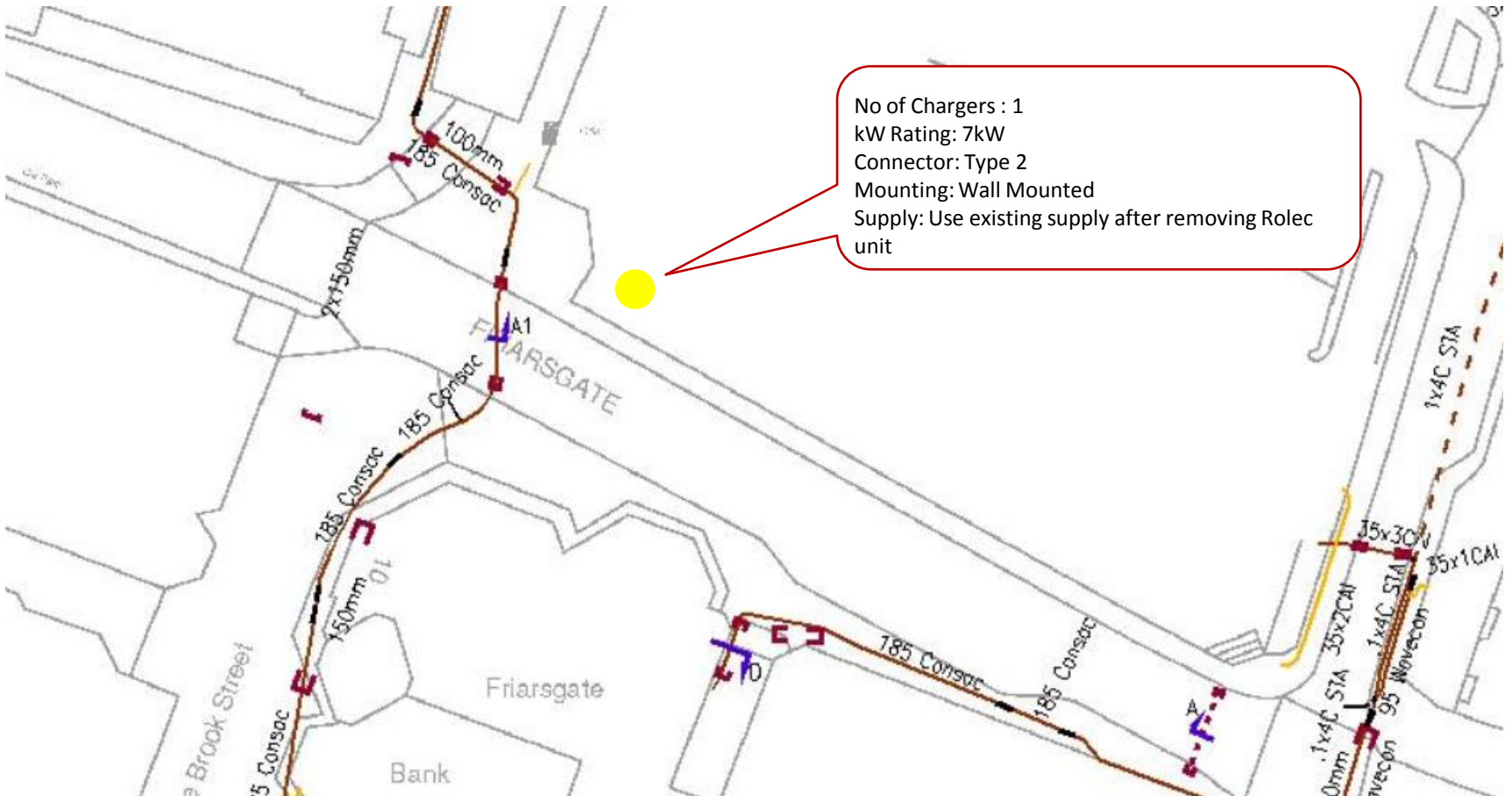


Winchester Middle Brook Street Car Park (Site Ref 7)

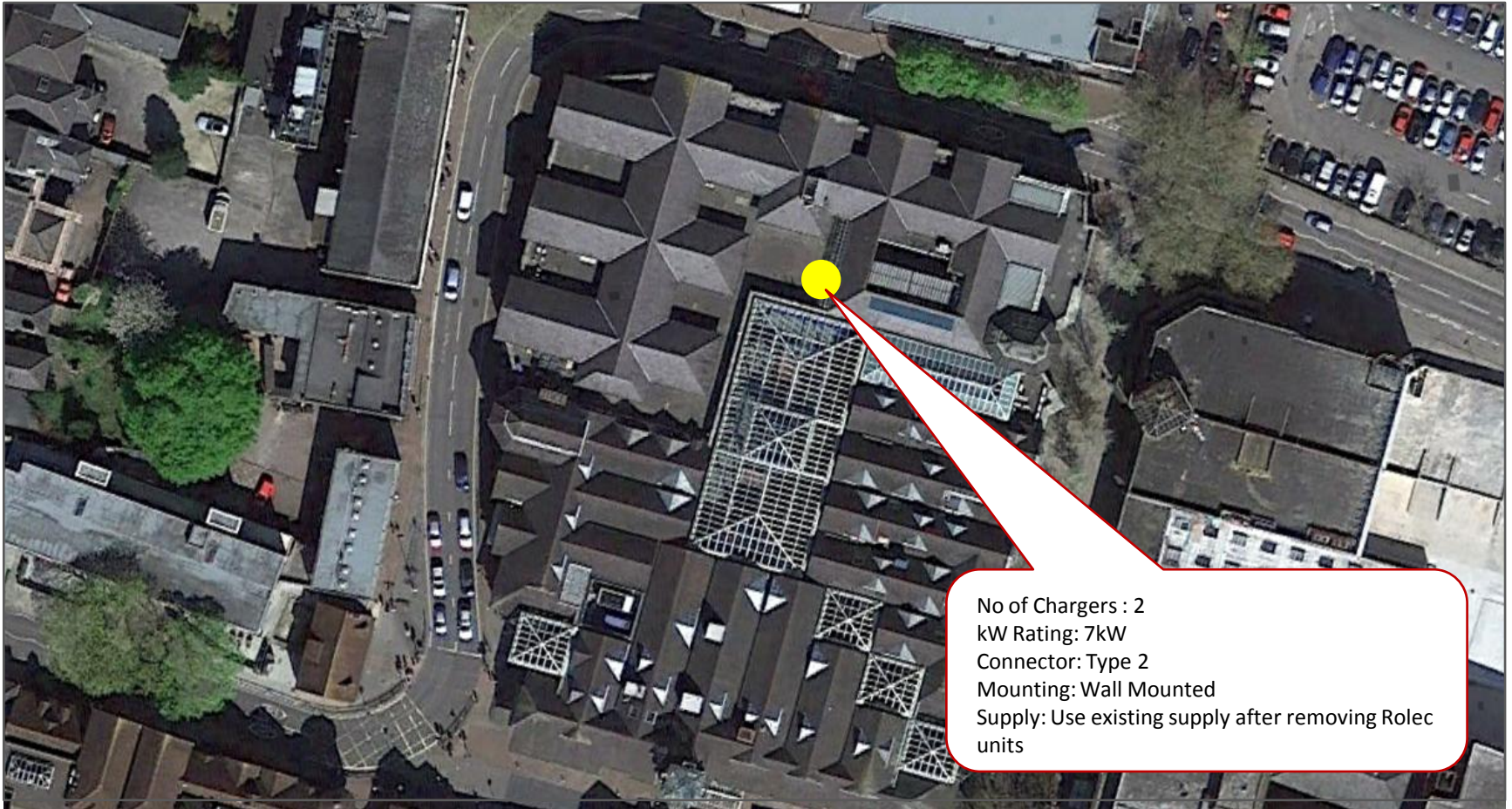


No of Chargers : 1
kW Rating: 7kW
Connector: Type 2
Mounting: Wall Mounted
Supply: Use existing supply after removing Rolec unit

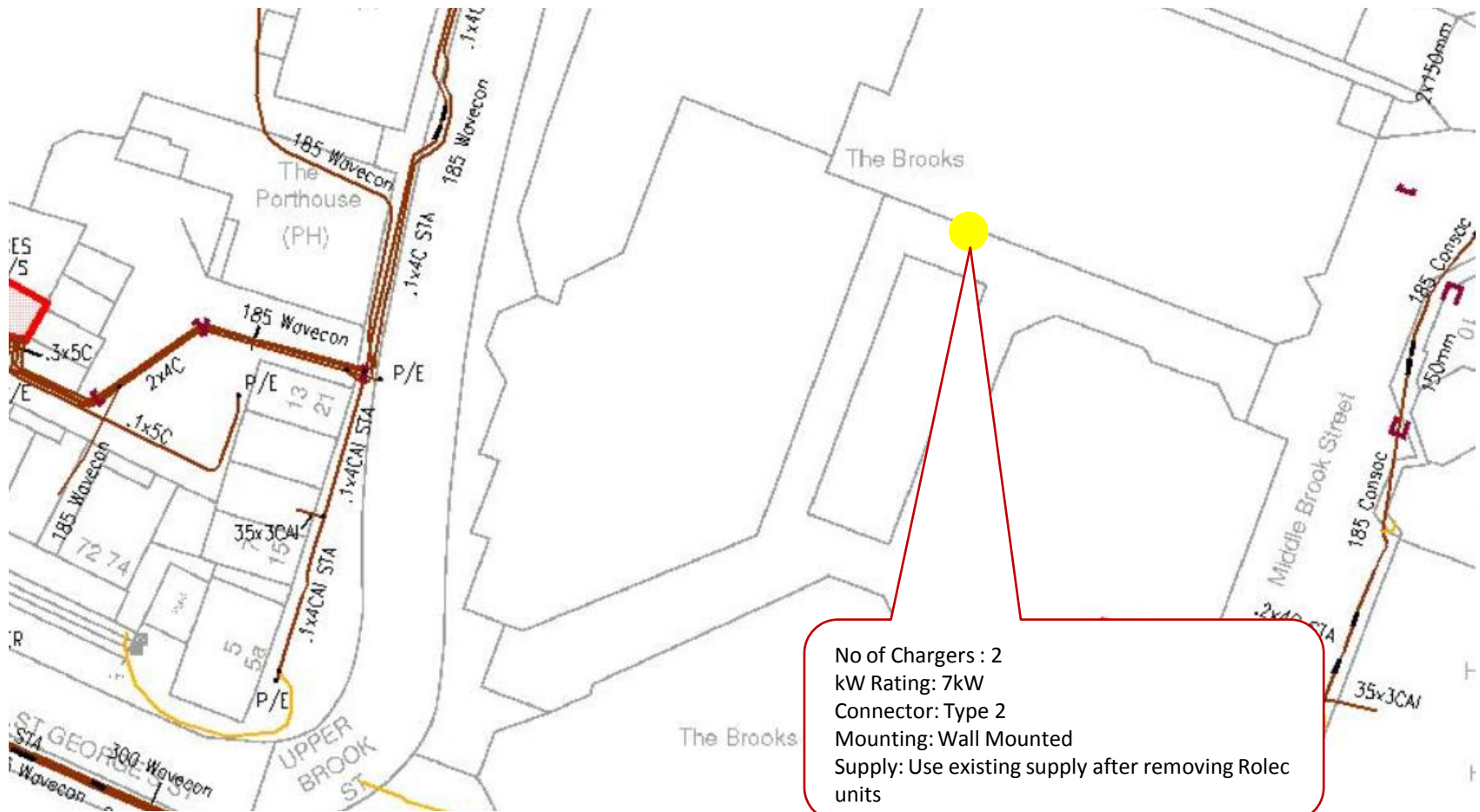
Winchester Middle Brook Street Car Park (Site Ref 7)



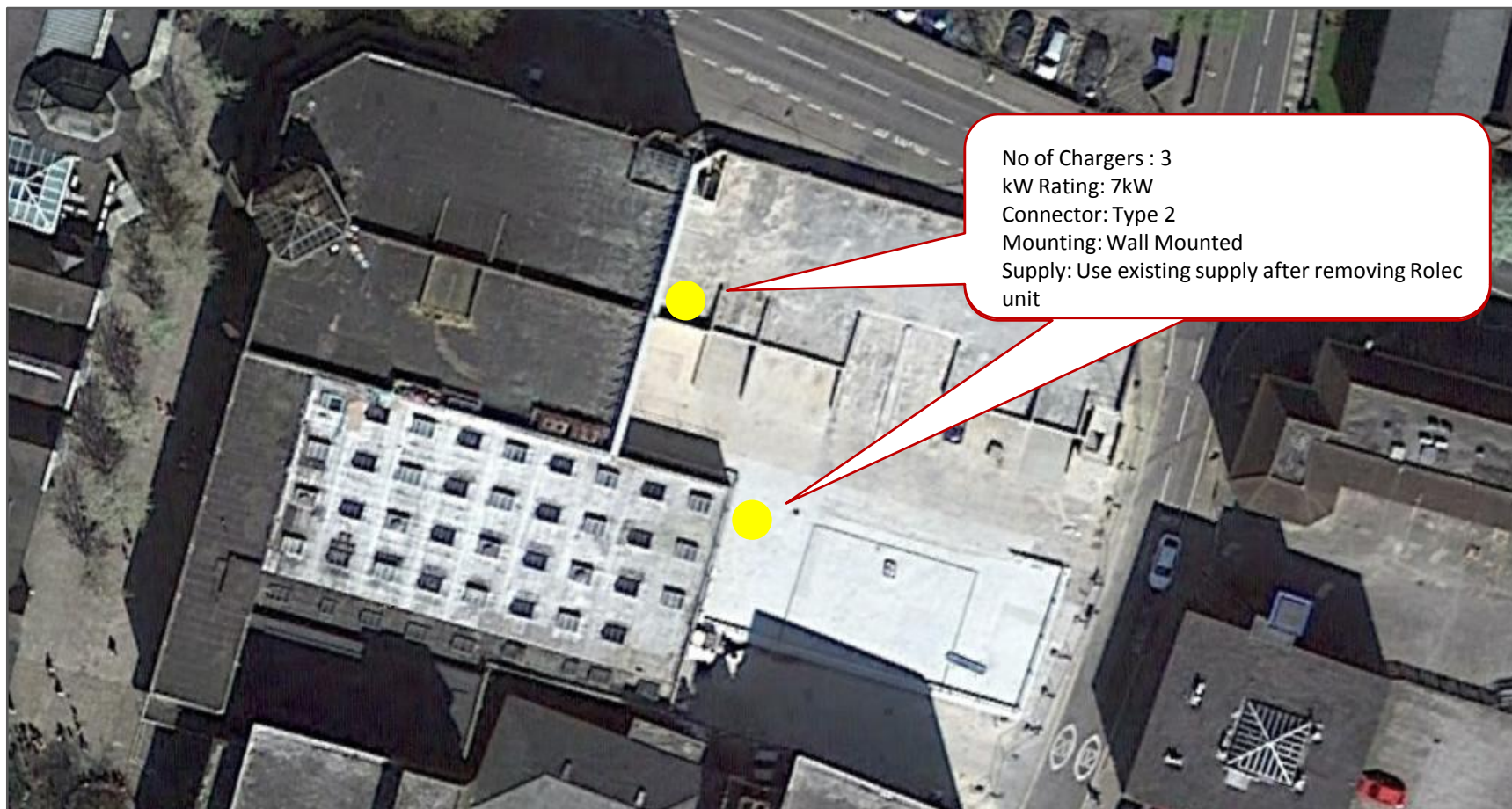
Winchester Brooks Shopping Centre (Site Ref 8)



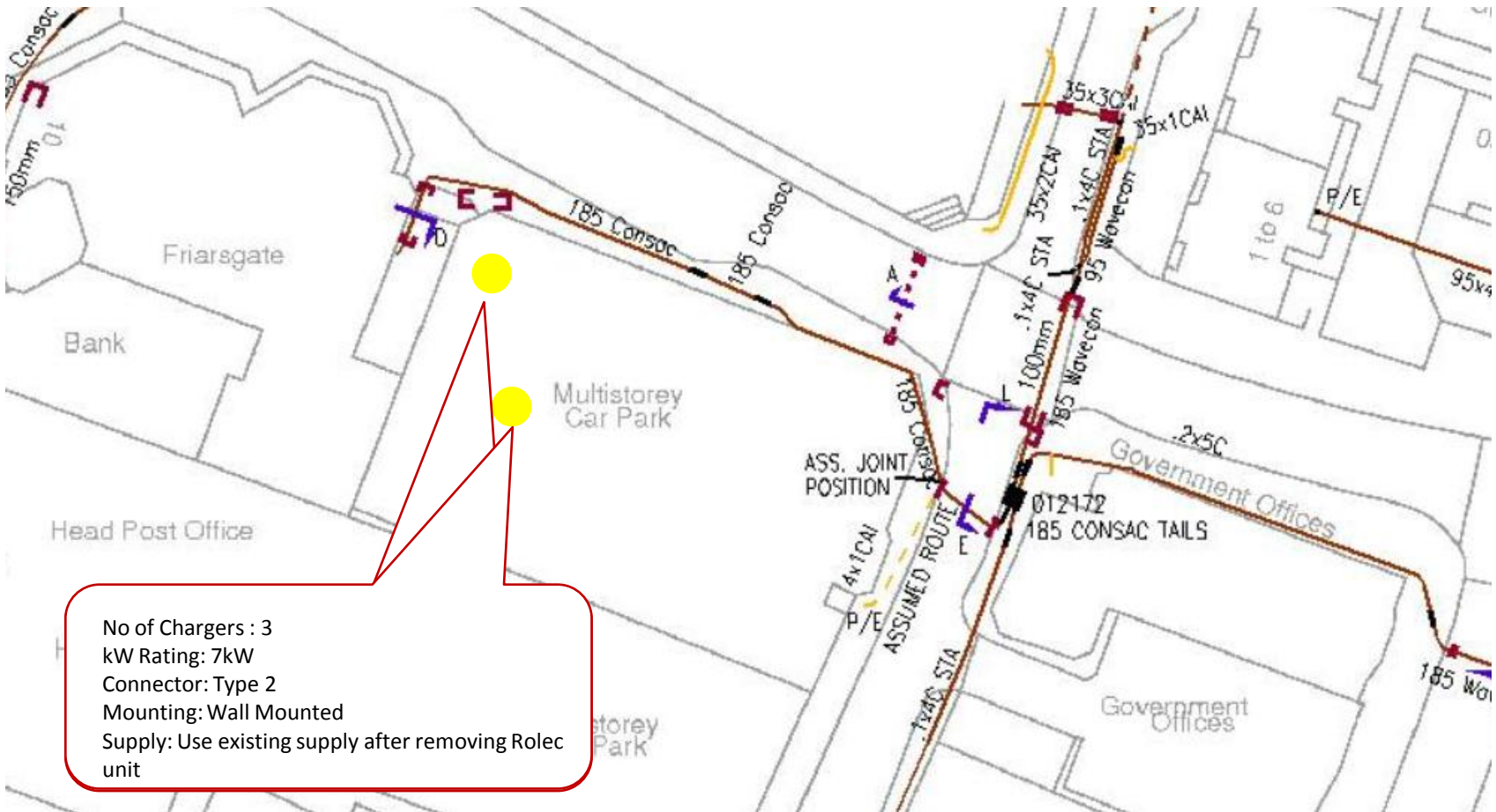
Winchester Brooks Shopping Centre (Site Ref 8)



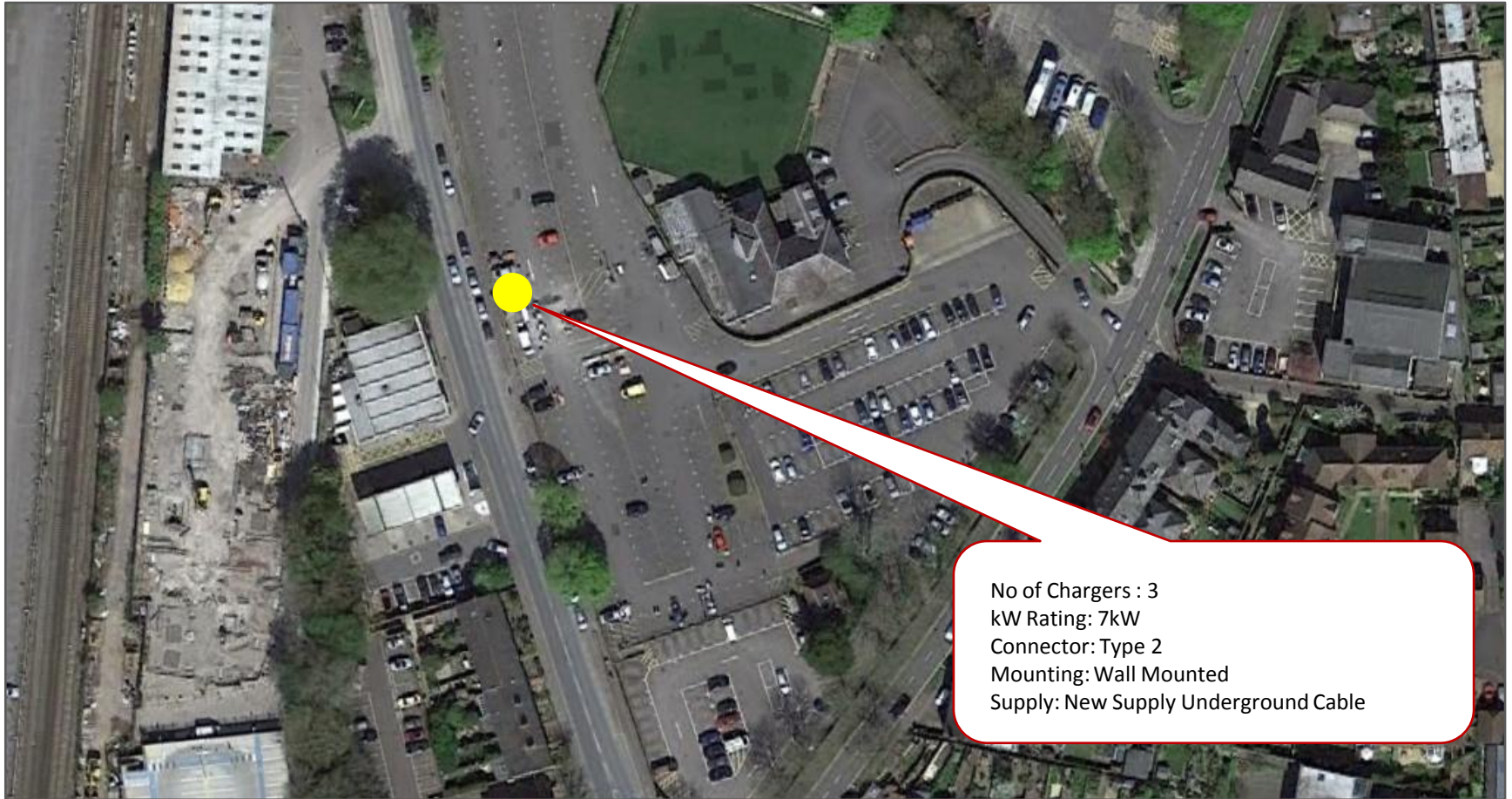
Winchester Friarsgate Car Park (Site Ref 9)



Winchester Friarsgate Car Park (Site Ref 9)

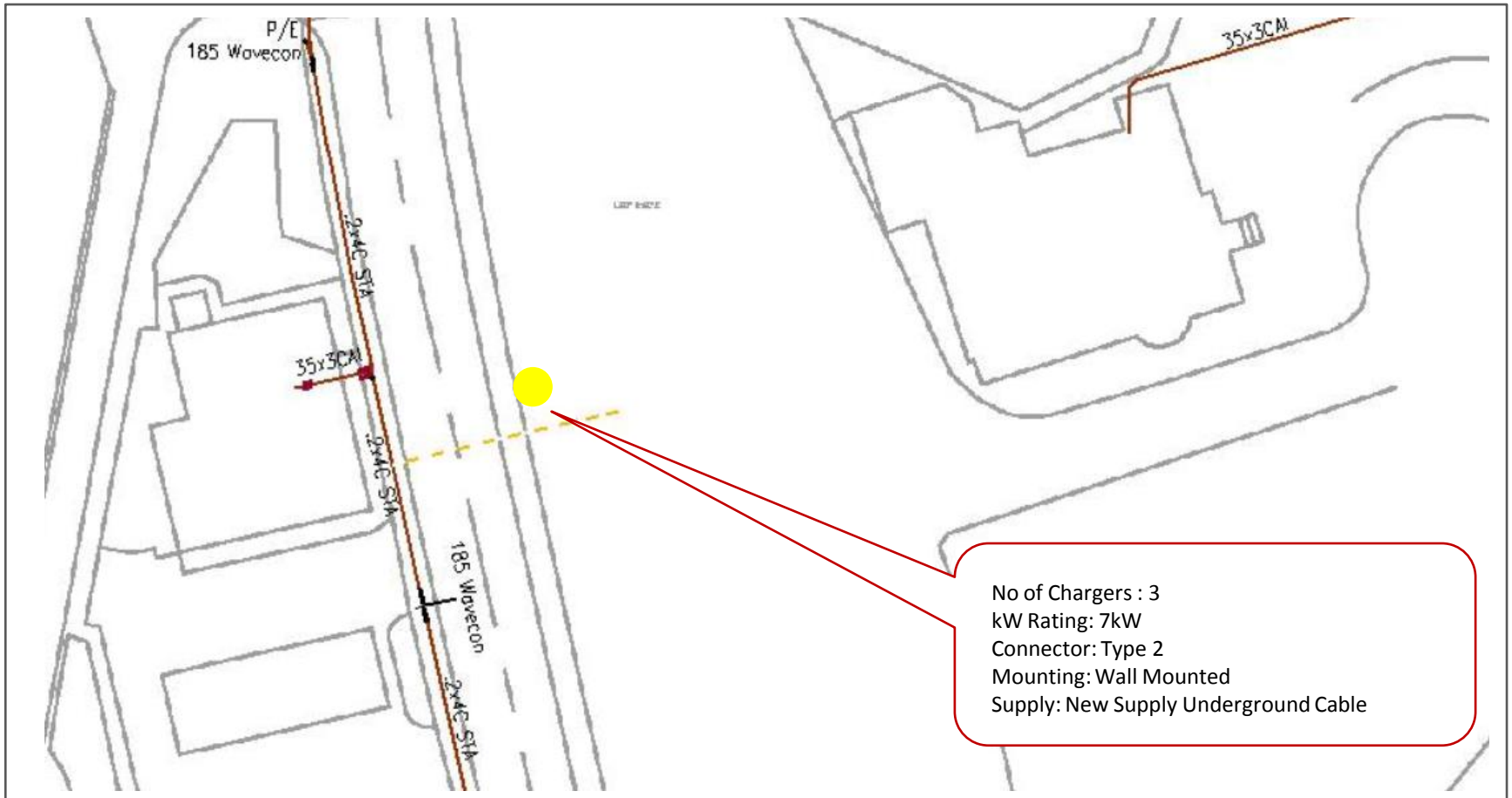


Winchester Worthy Lane Car Park (Site Ref 10)



No of Chargers : 3
kW Rating: 7kW
Connector: Type 2
Mounting: Wall Mounted
Supply: New Supply Underground Cable

Winchester Worthy Lane Car Park (Site Ref 10)





Park & Ride Car Parks EV Charging Infrastructure

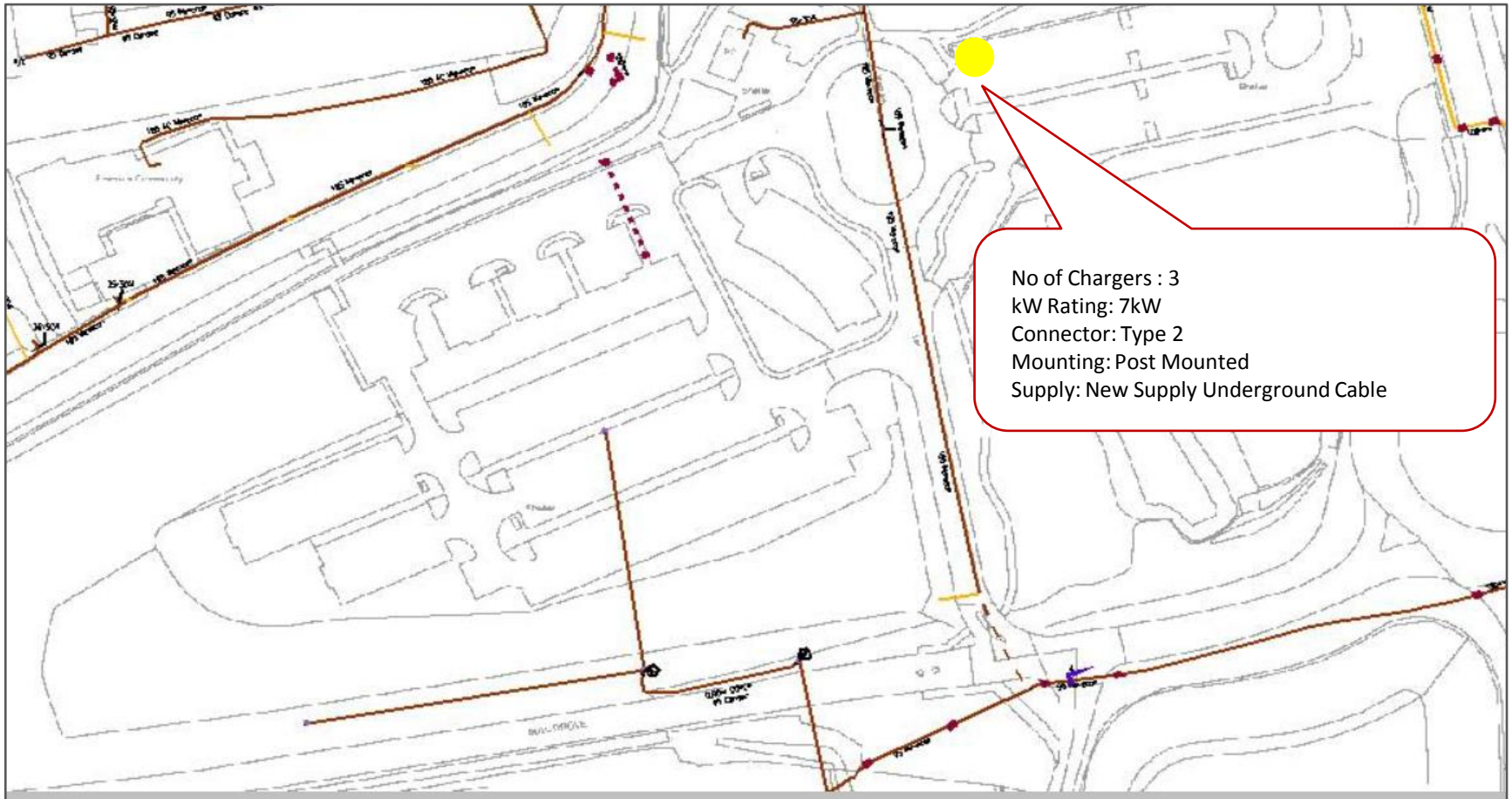


Winchester
City Council

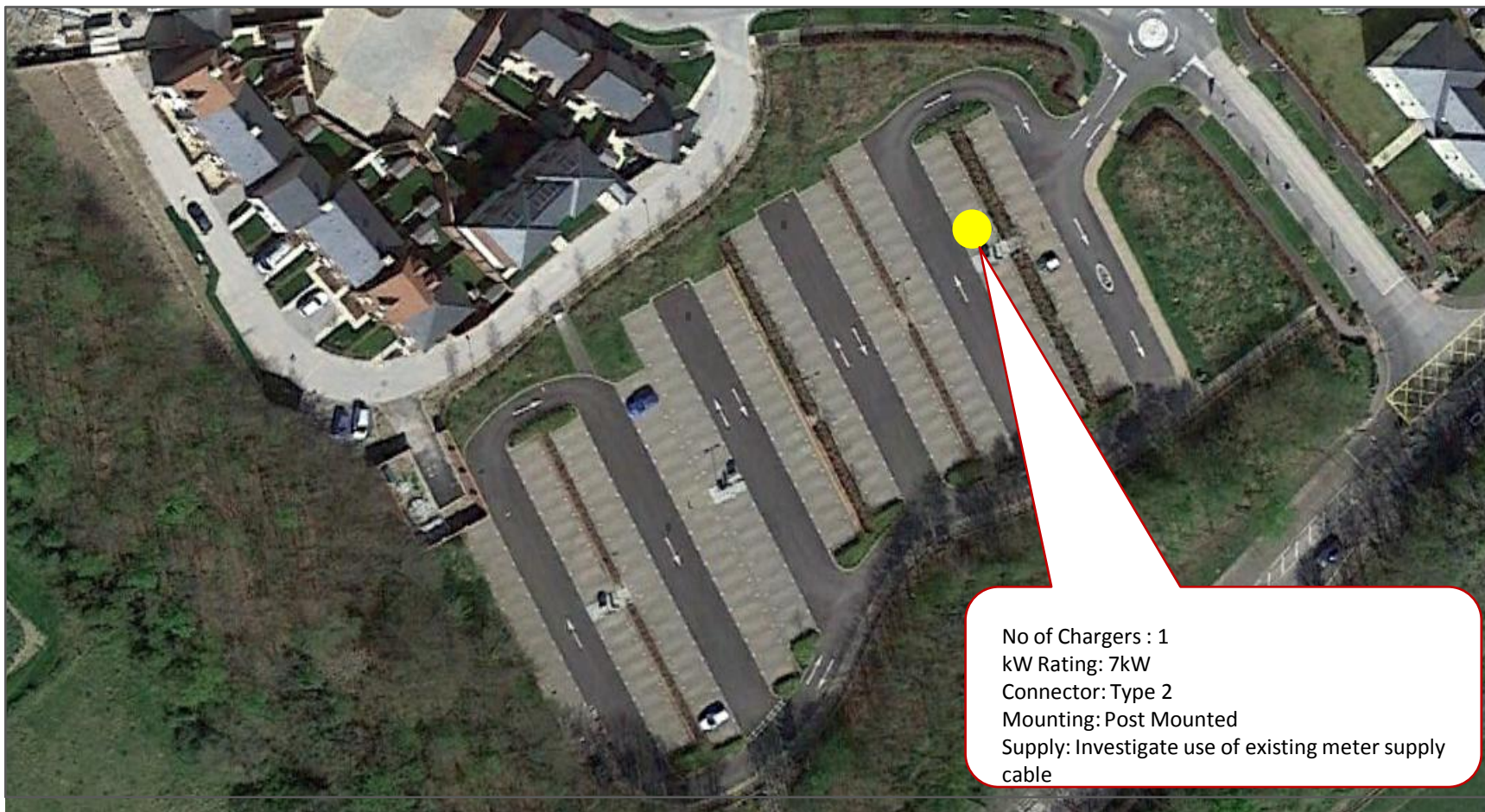
East Winchester Park & Ride (Site Ref 12)



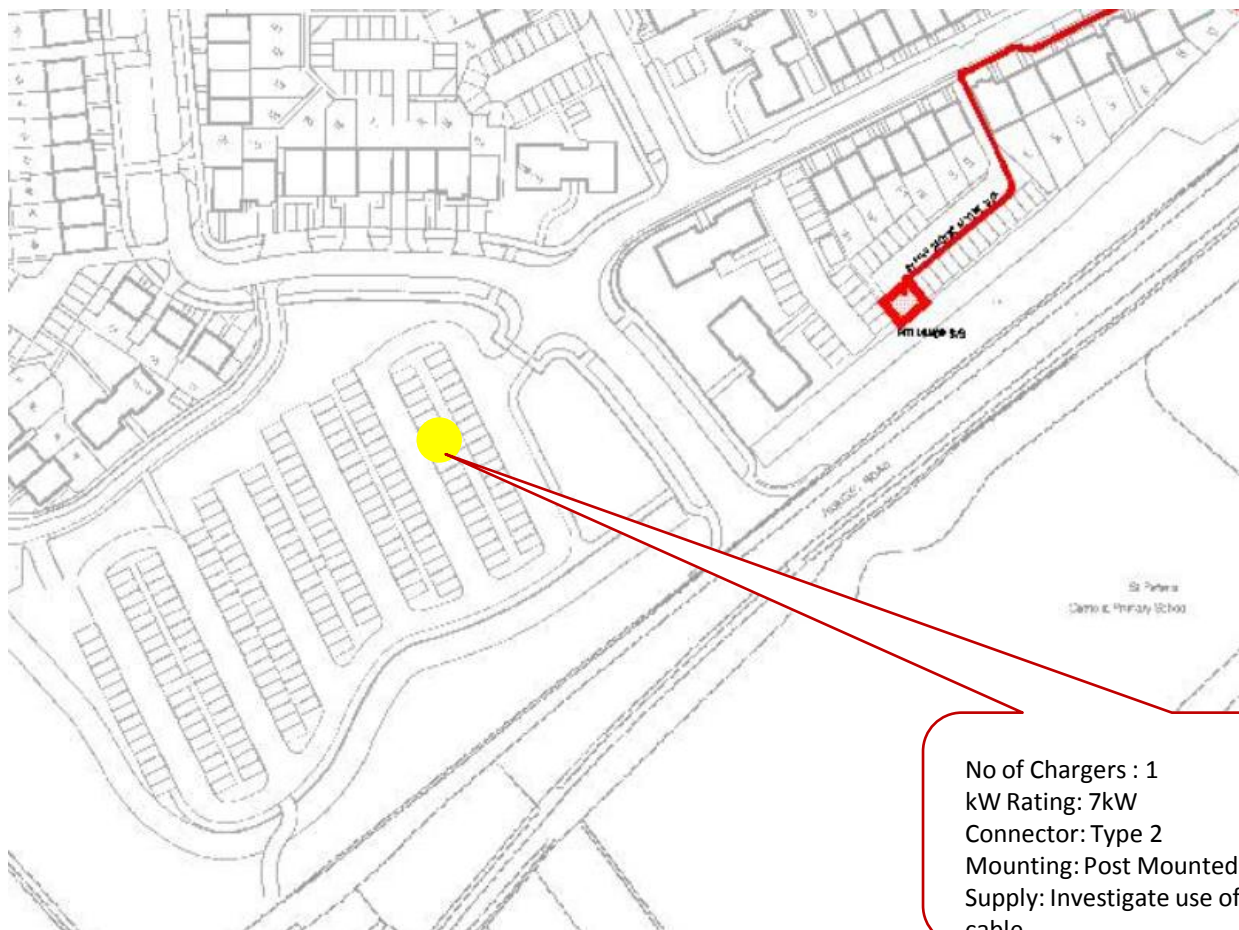
East Winchester Park & Ride (Site Ref 12)



Pitt Park and Ride (Site Ref 13)



Pitt Park and Ride (Site Ref 13)

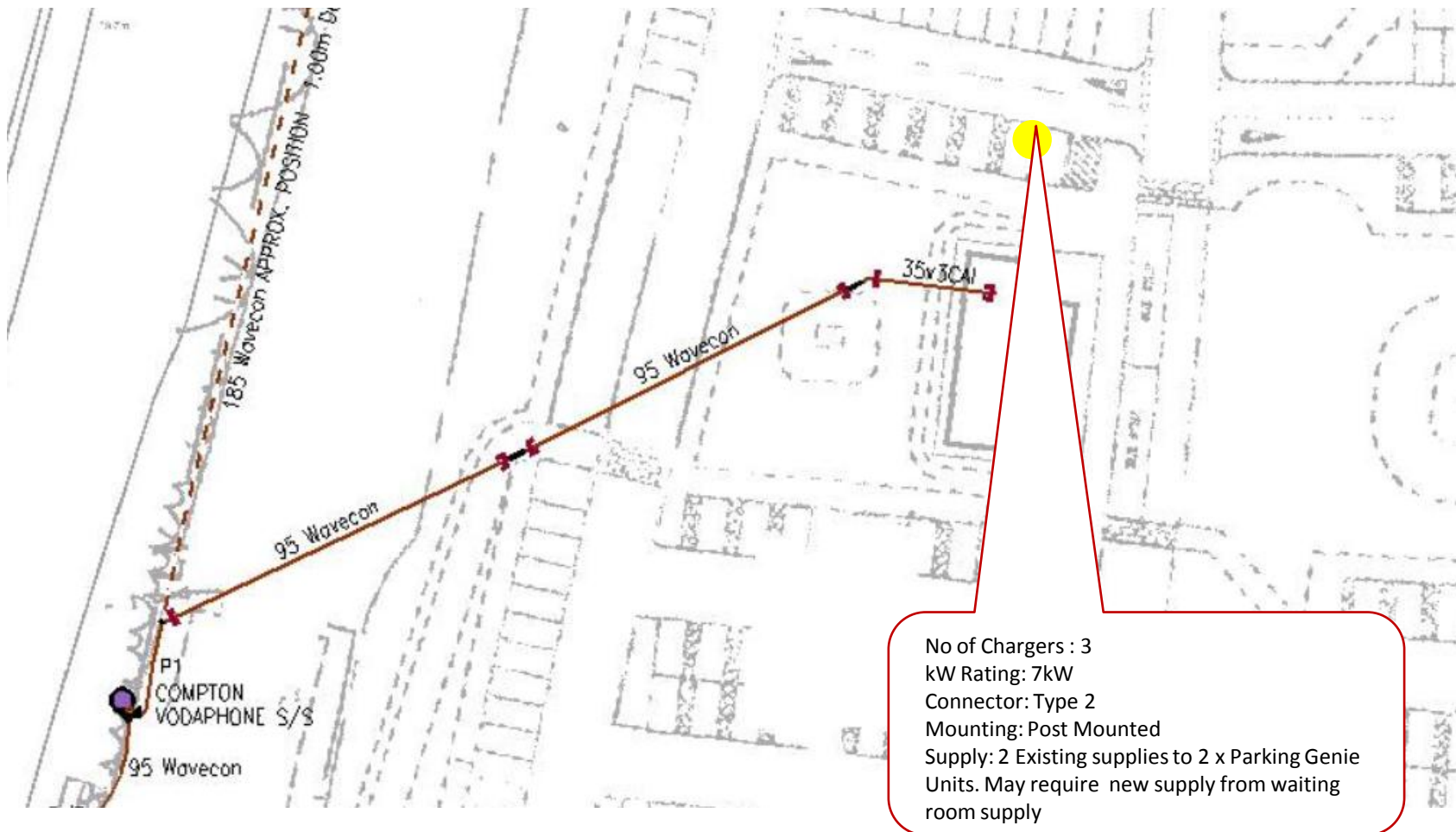


No of Chargers : 1
kW Rating: 7kW
Connector: Type 2
Mounting: Post Mounted
Supply: Investigate use of existing meter supply cable

South Winchester Park & Ride (Site Ref 14)



South Winchester Park & Ride (Site Ref 14)



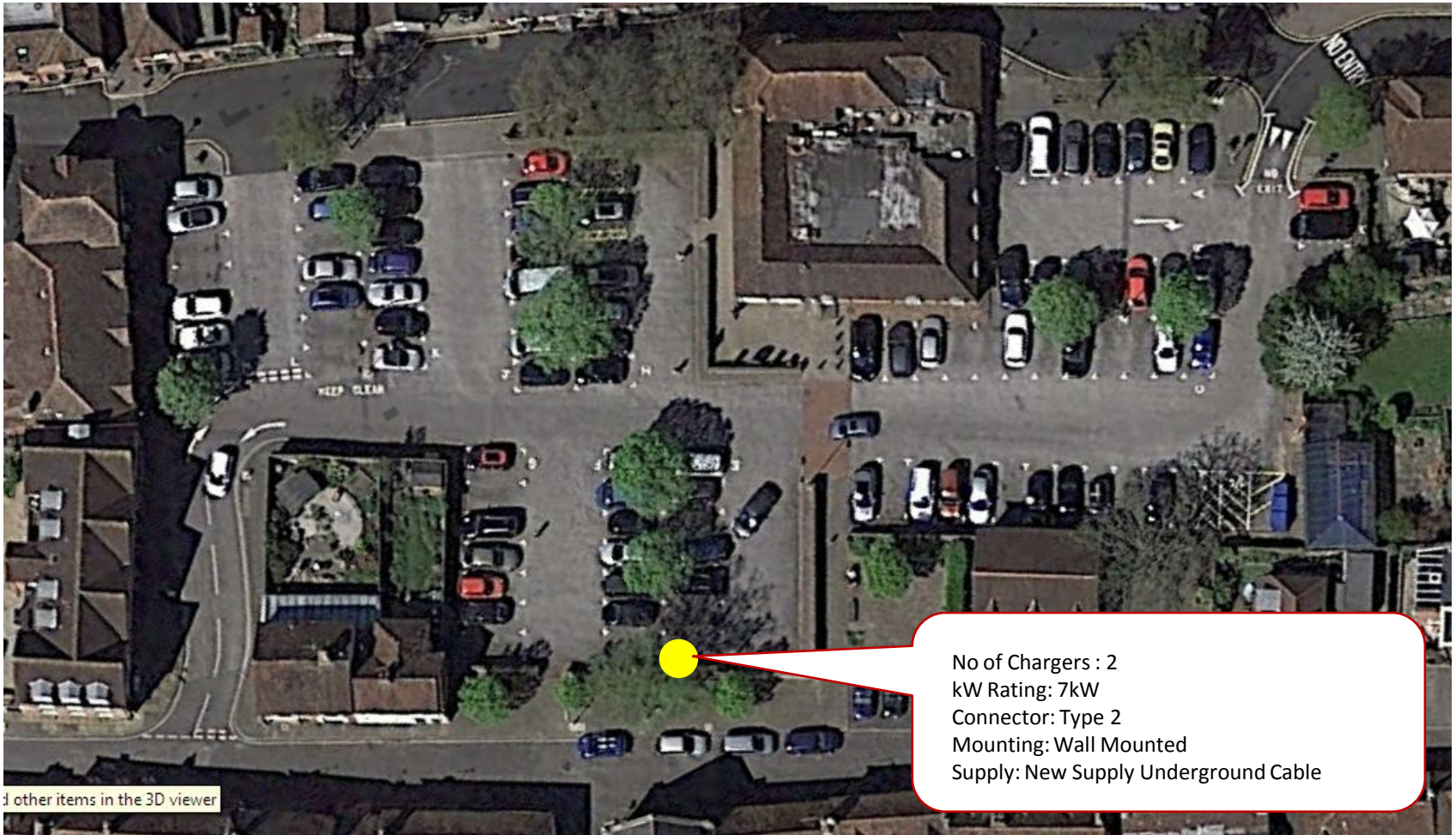


Rural Car Parks EV Charging Infrastructure



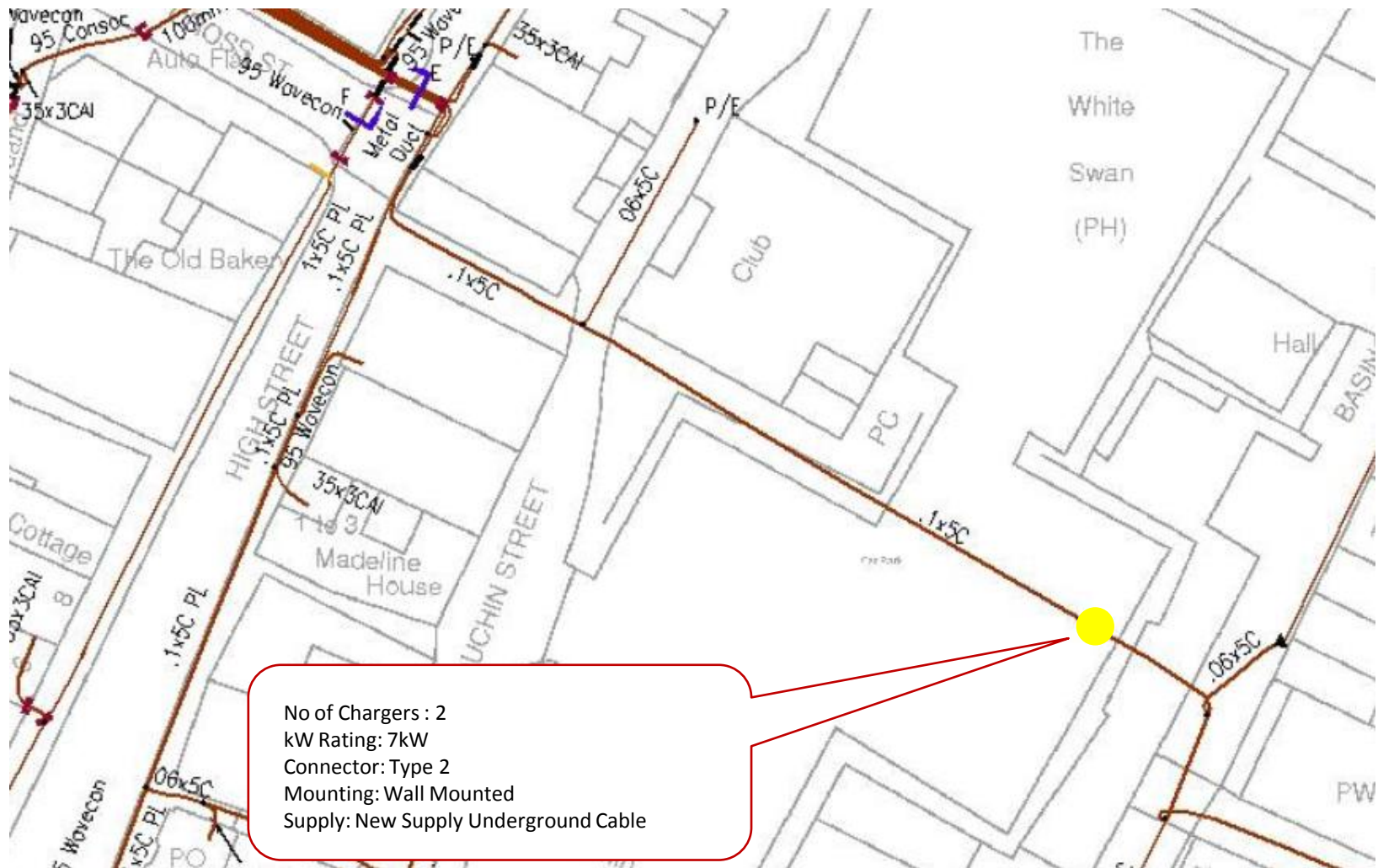
Winchester
City Council

Bishops Waltham – Basingwell Street (Site Ref 15)

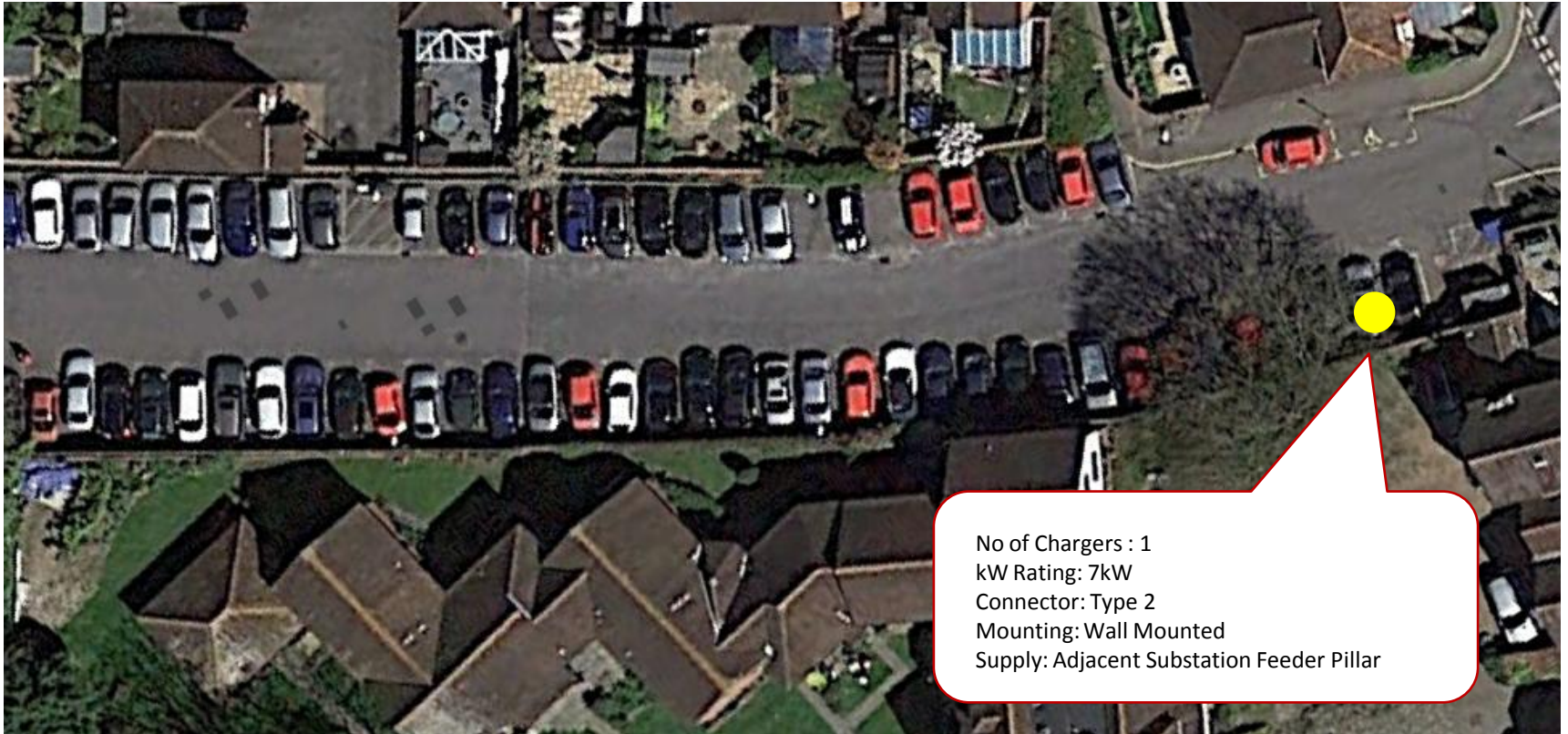


and other items in the 3D viewer

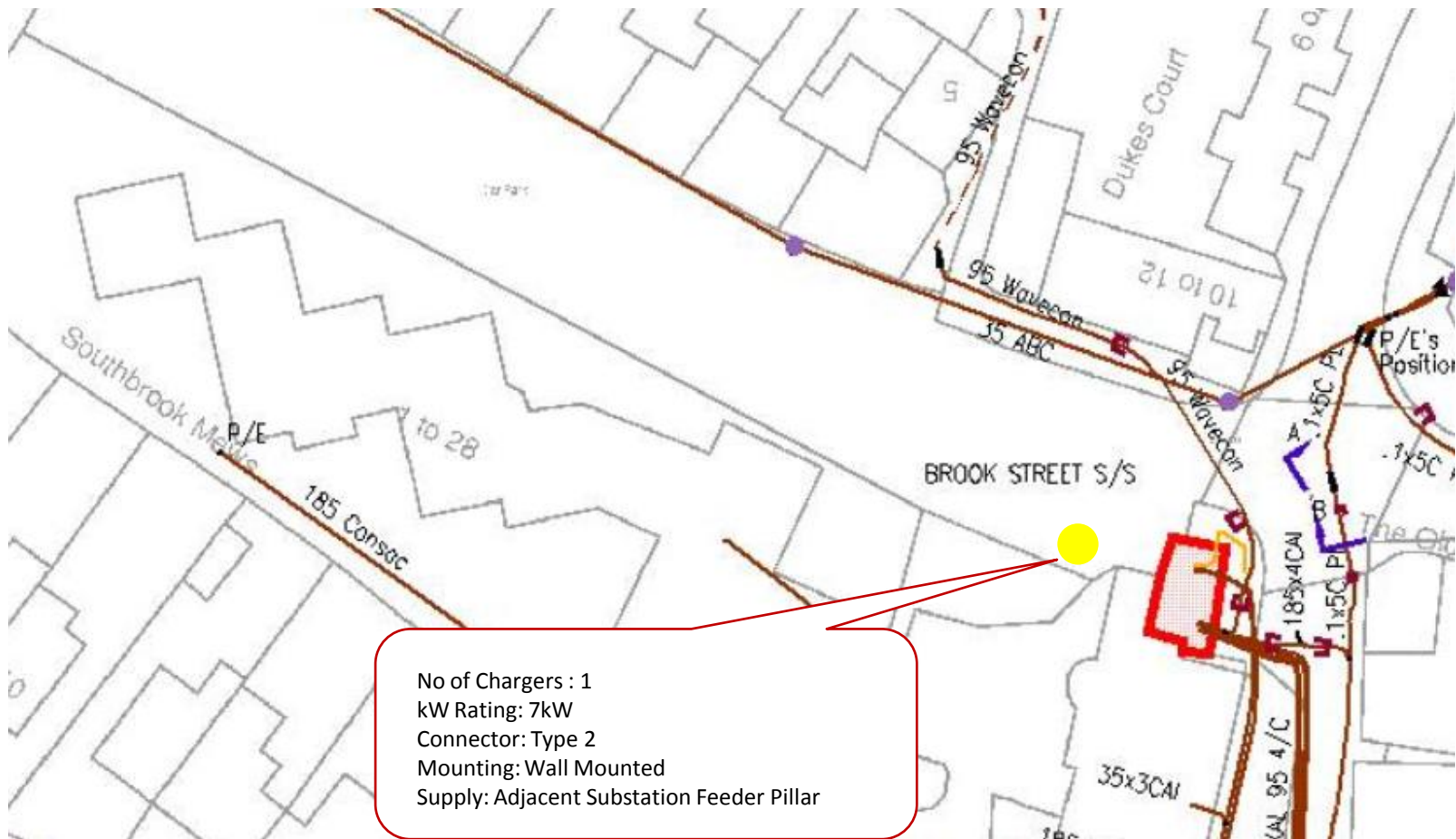
Bishops Waltham – Basingwell Street (Site Ref 15)



Bishops Waltham – Lower Lane (Site Ref 16)



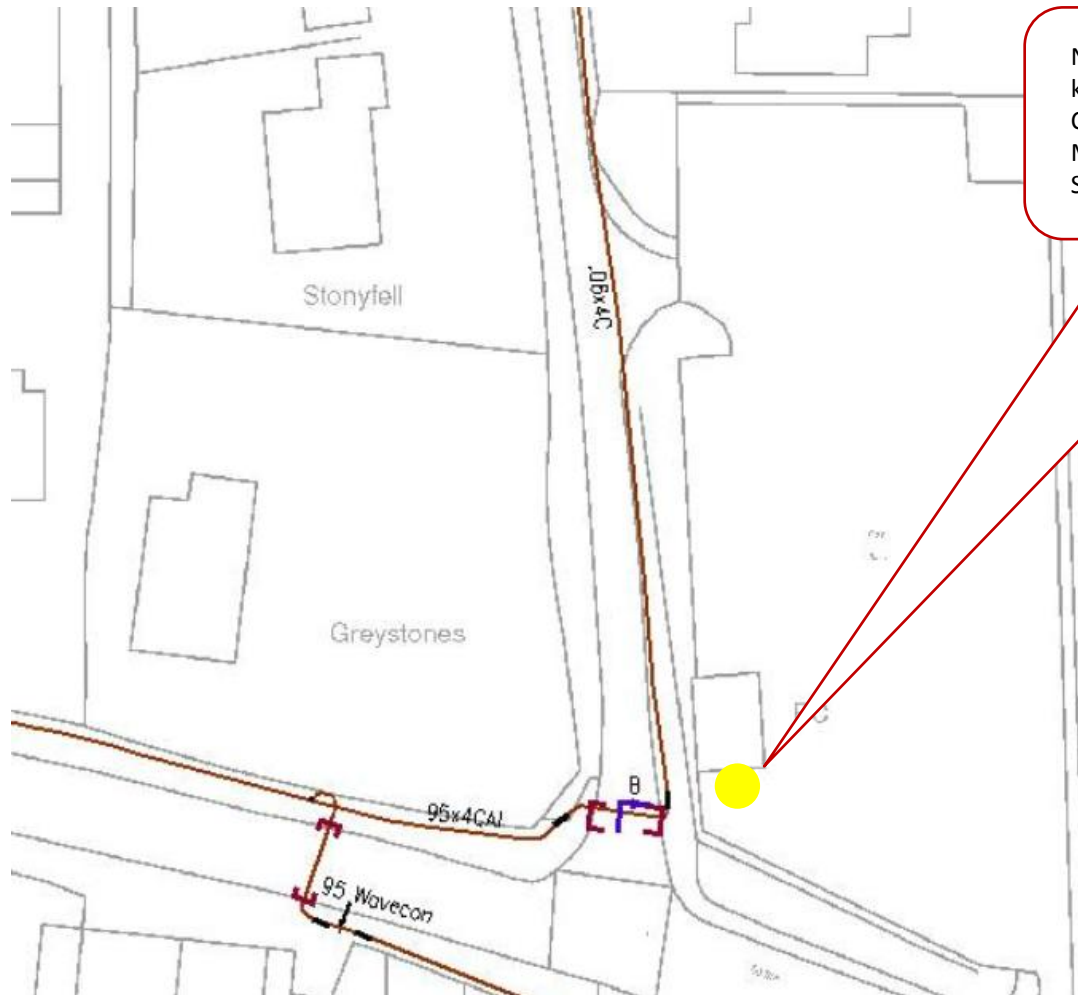
Bishops Waltham – Lower Lane (Site Ref 16)



Denmead – Kidmore Lane (Site Ref 17)

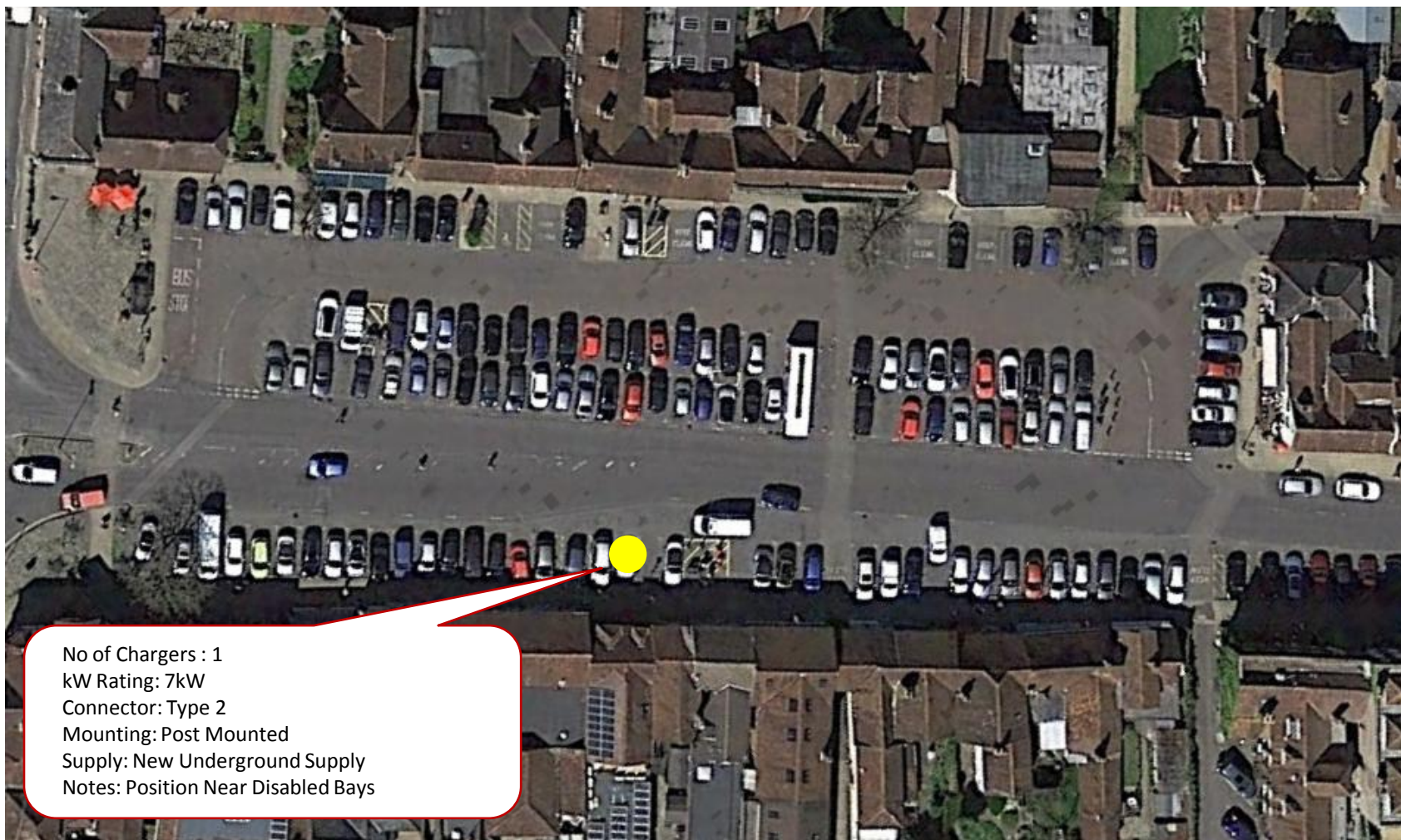


Denmead – Kidmore Lane (Site Ref 17)



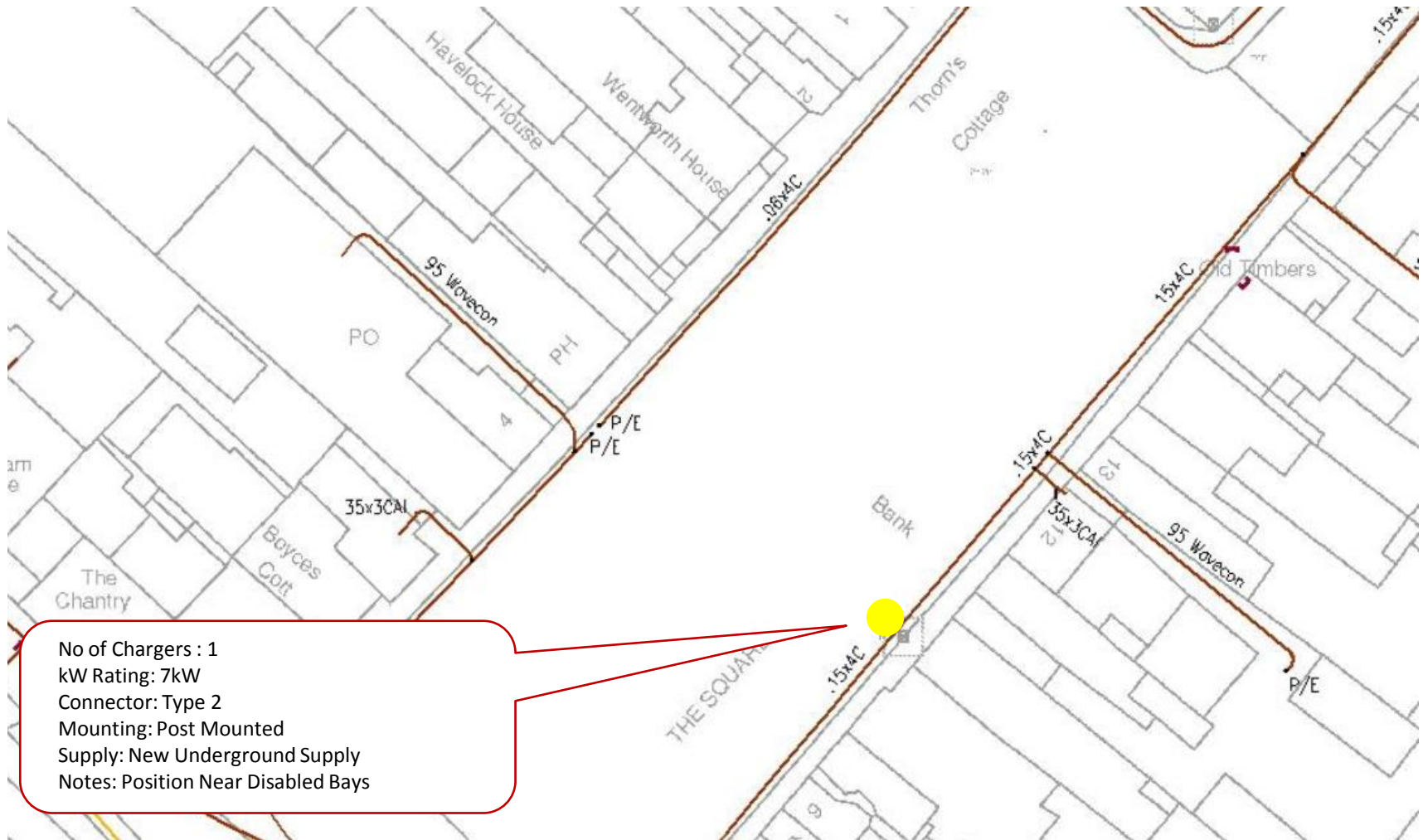
No of Chargers : 1
kW Rating: 7kW
Connector: Type 2
Mounting: Wall Mounted
Supply: Possibly Toilet Supply Point

Wickham – Wickham Square (Site Ref 18)



No of Chargers : 1
kW Rating: 7kW
Connector: Type 2
Mounting: Post Mounted
Supply: New Underground Supply
Notes: Position Near Disabled Bays

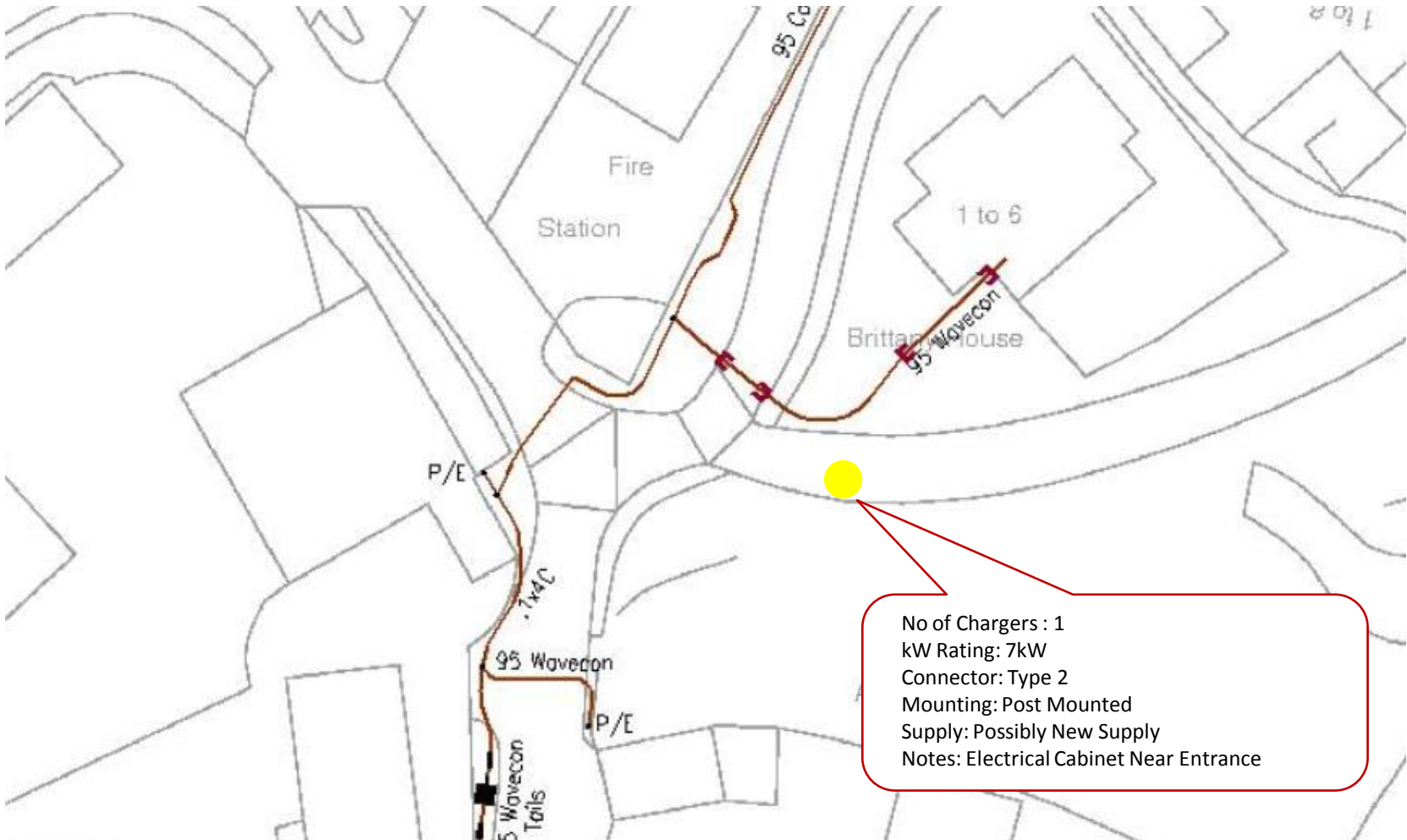
Wickham – Wickham Square (Site Ref 18)



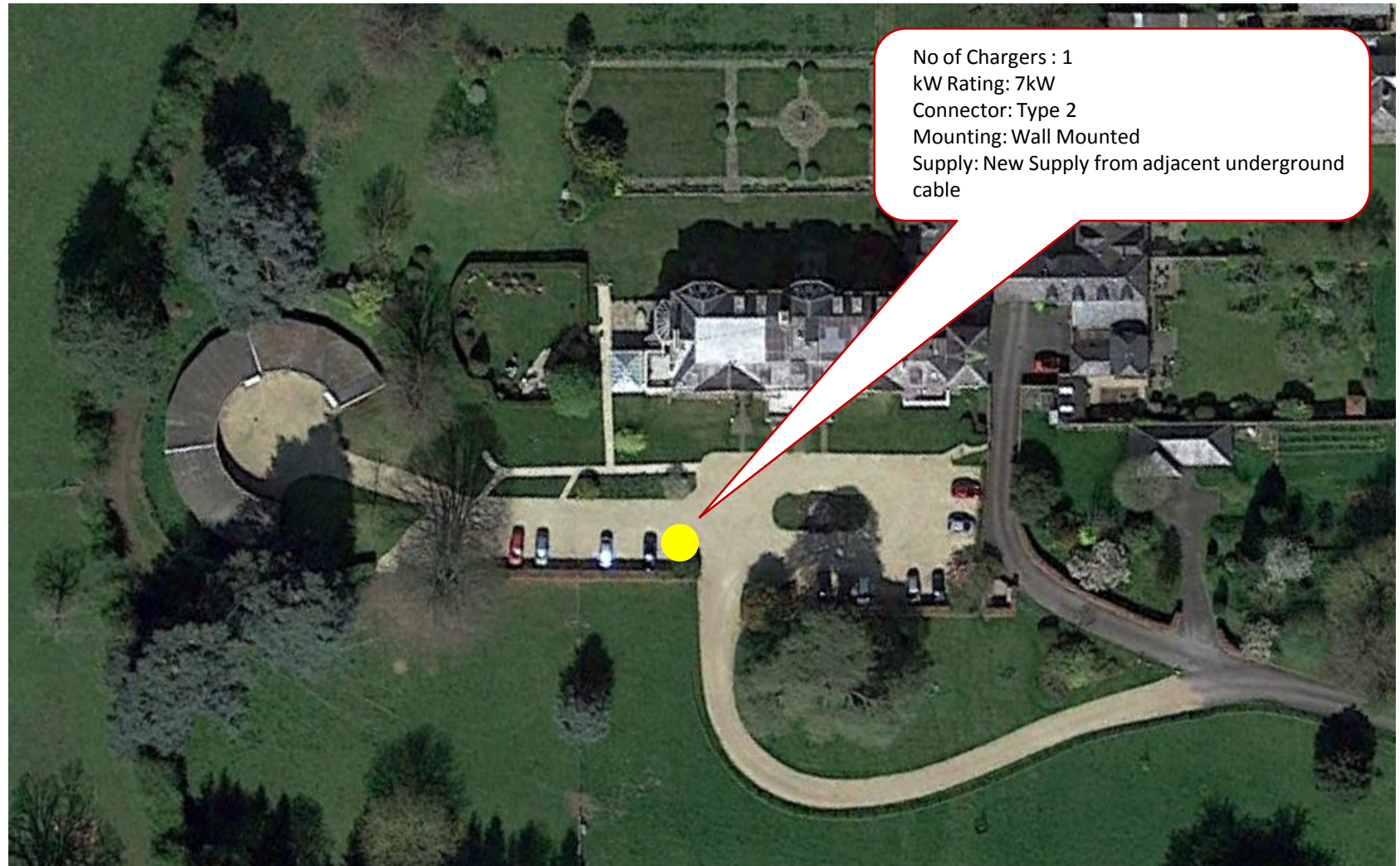
Wickham – Wickham Station (Site Ref 19)



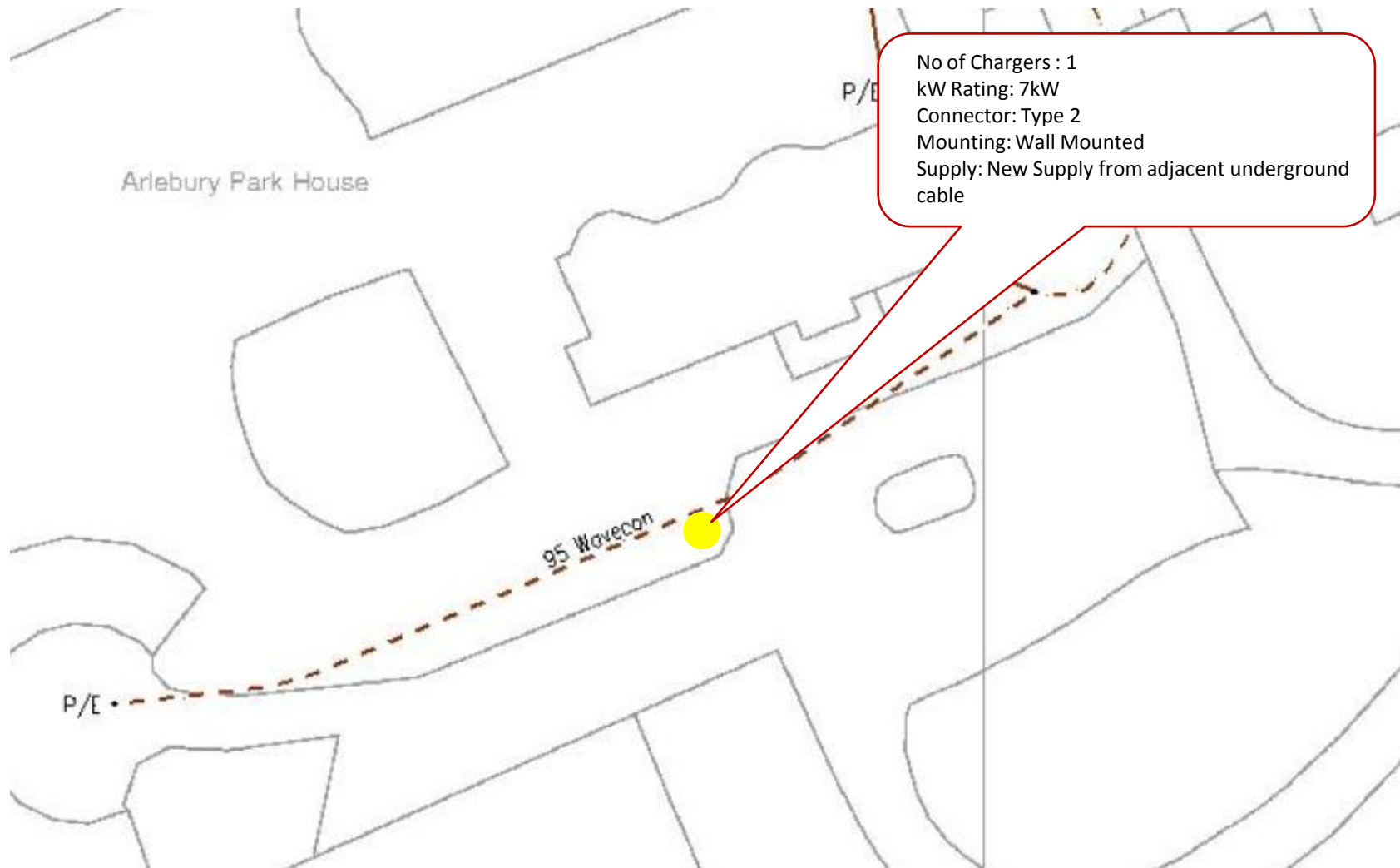
Wickham – Wickham Station (Site Ref 19)



New Alresford – Arlebury Park (Site Ref 20)



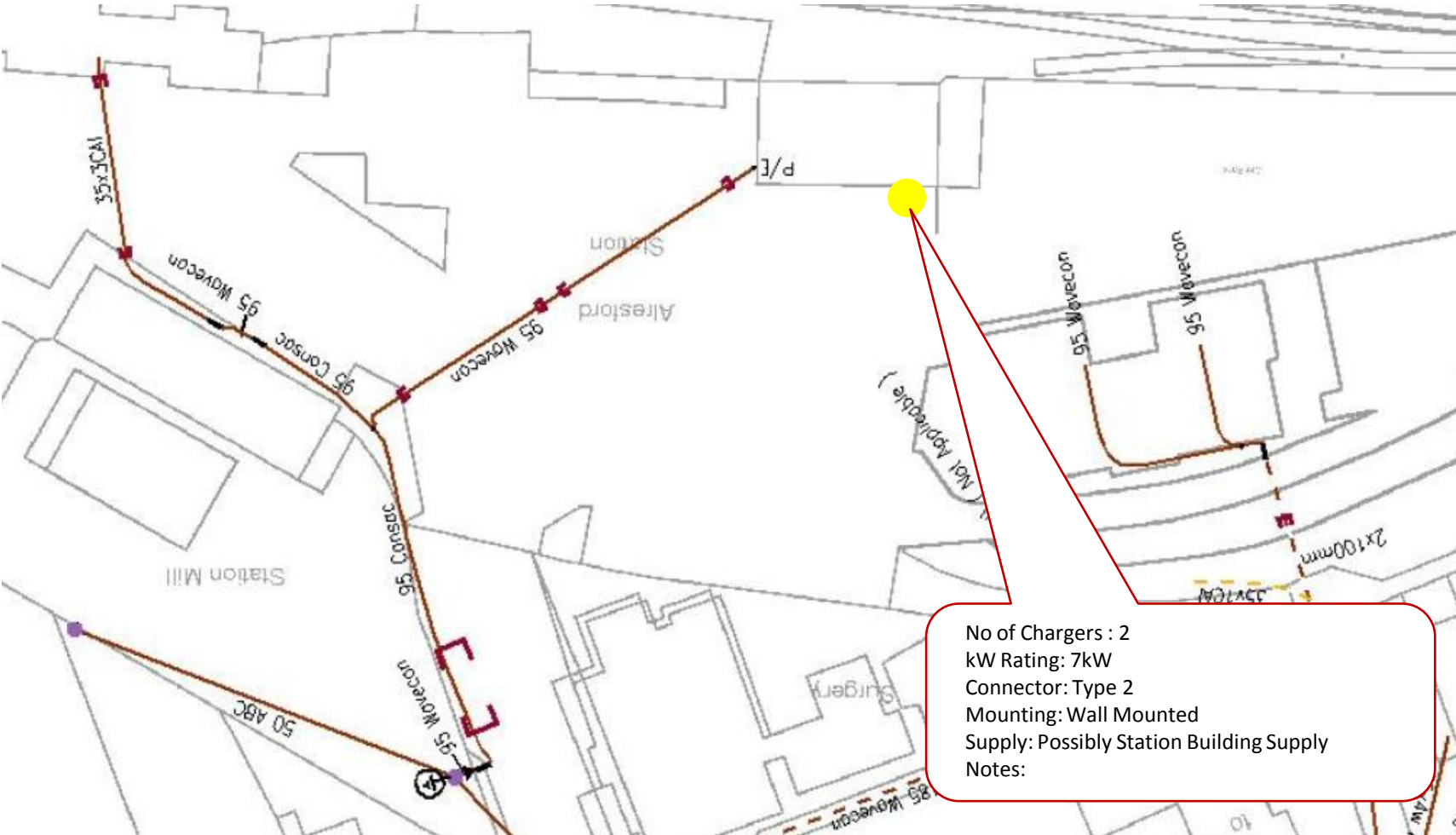
New Alresford – Arlebury Park (Site Ref 20)



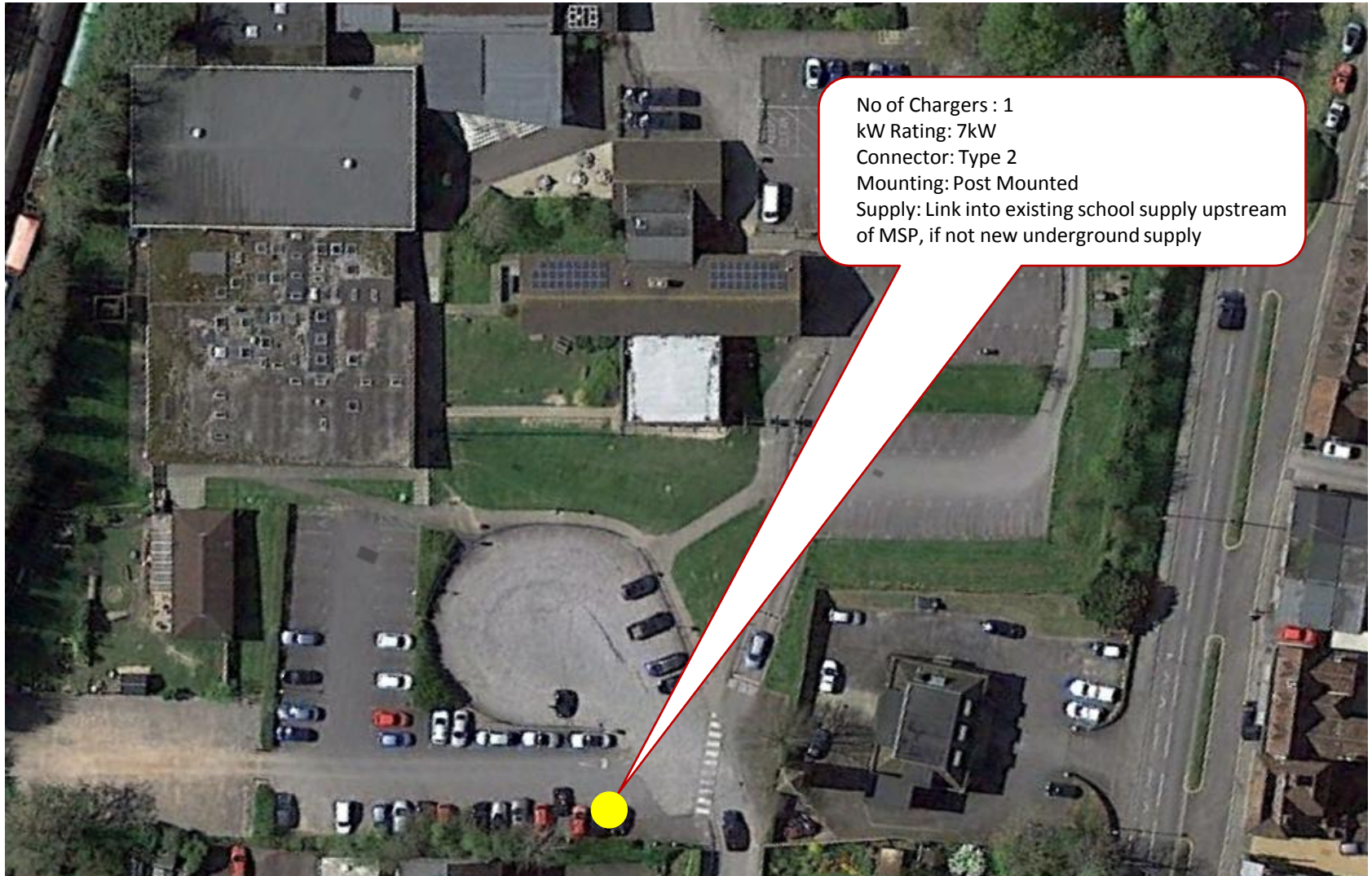
New Alresford – Alresford Station (Site Ref 21)



New Alresford – Alresford Station (Site Ref 21)

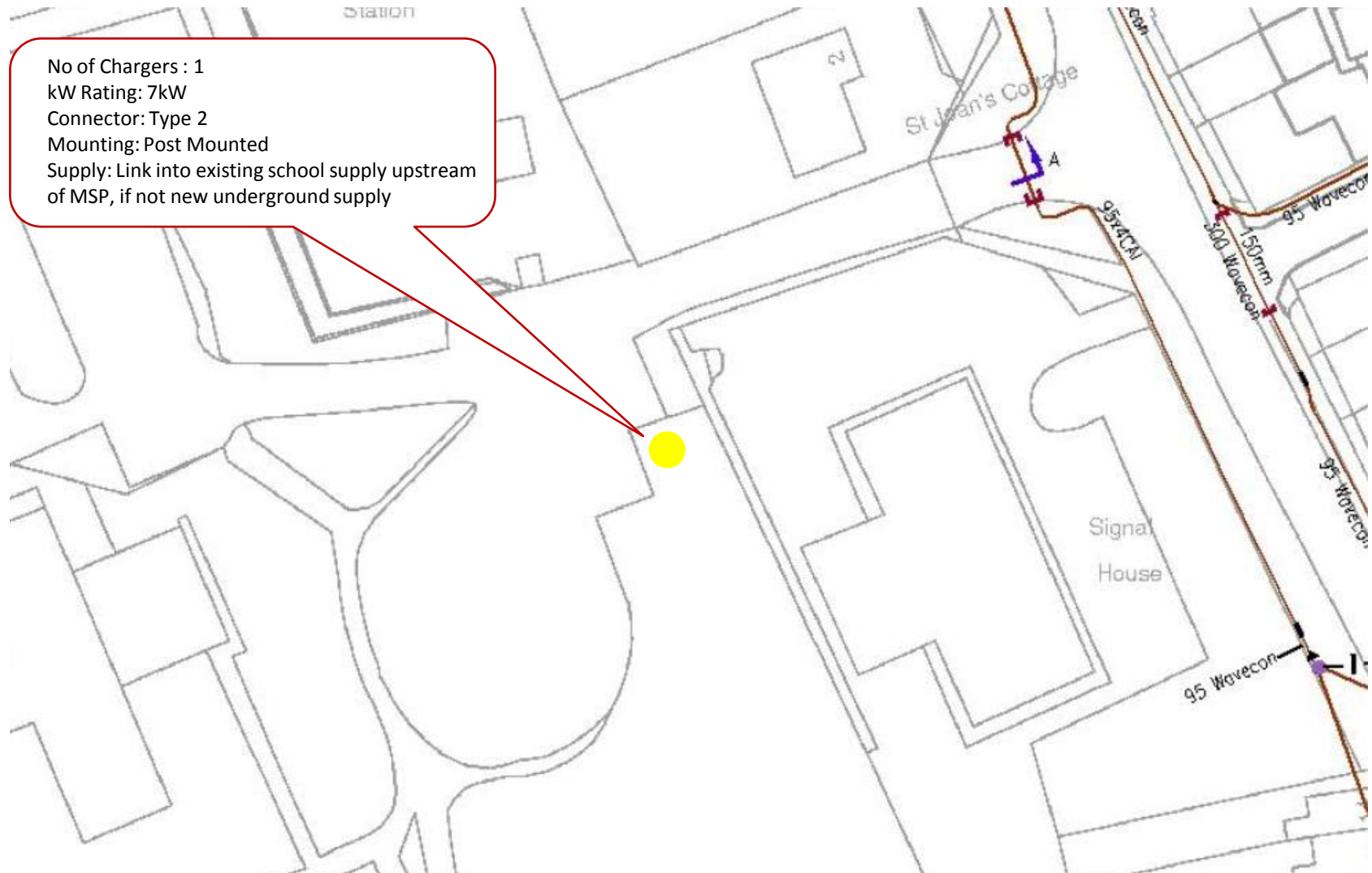


New Alresford – Perins, Jacklyn Lane (Site Ref 22)



No of Chargers : 1
kW Rating: 7kW
Connector: Type 2
Mounting: Post Mounted
Supply: Link into existing school supply upstream of MSP, if not new underground supply

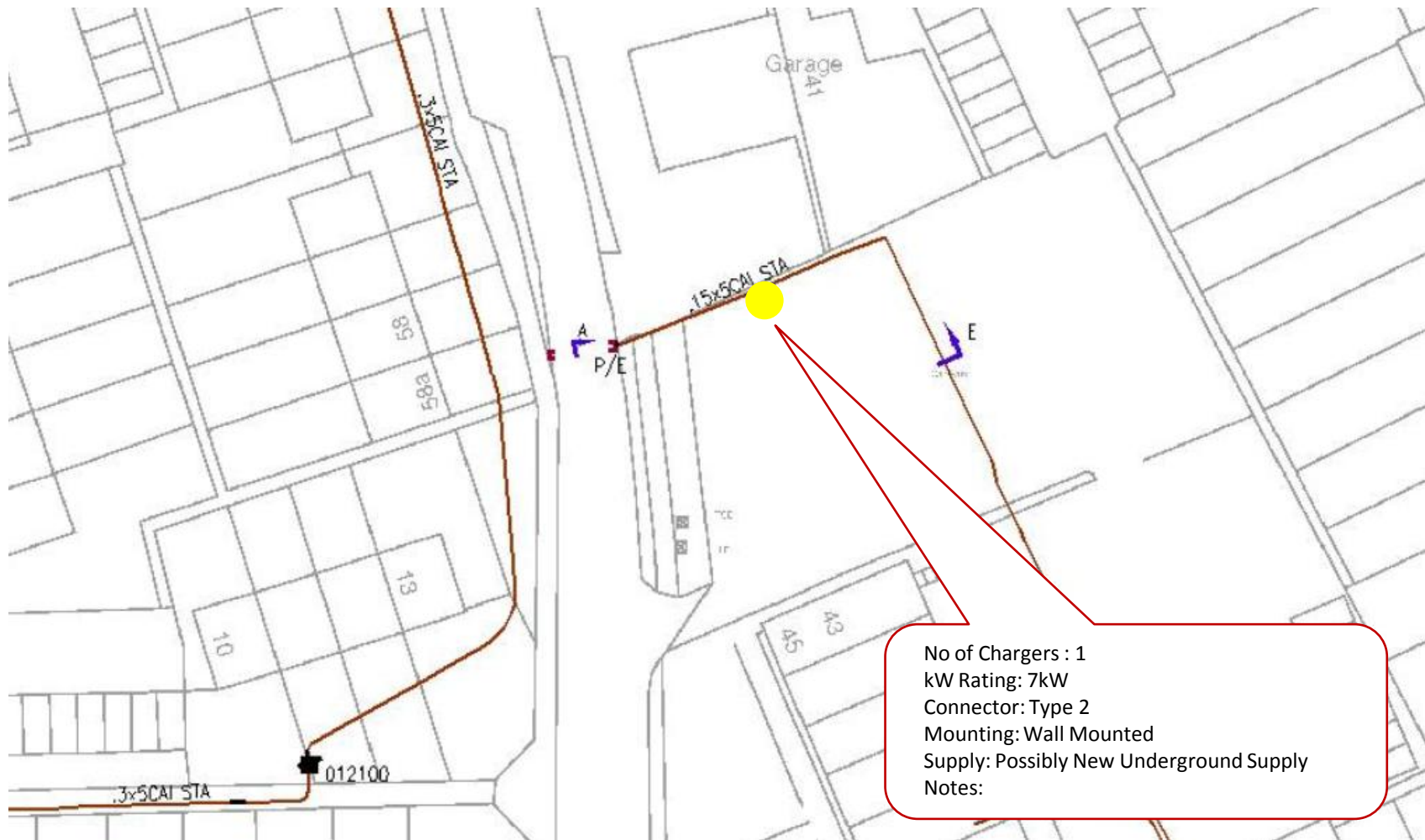
New Alresford – Perins, Jacklyn Lane (Site Ref 22)



Harestock - Priors Dean (Site Ref 23)



Harestock - Priors Dean (Site Ref 23)





AQMA On Street Parking EV Charging Infrastructure



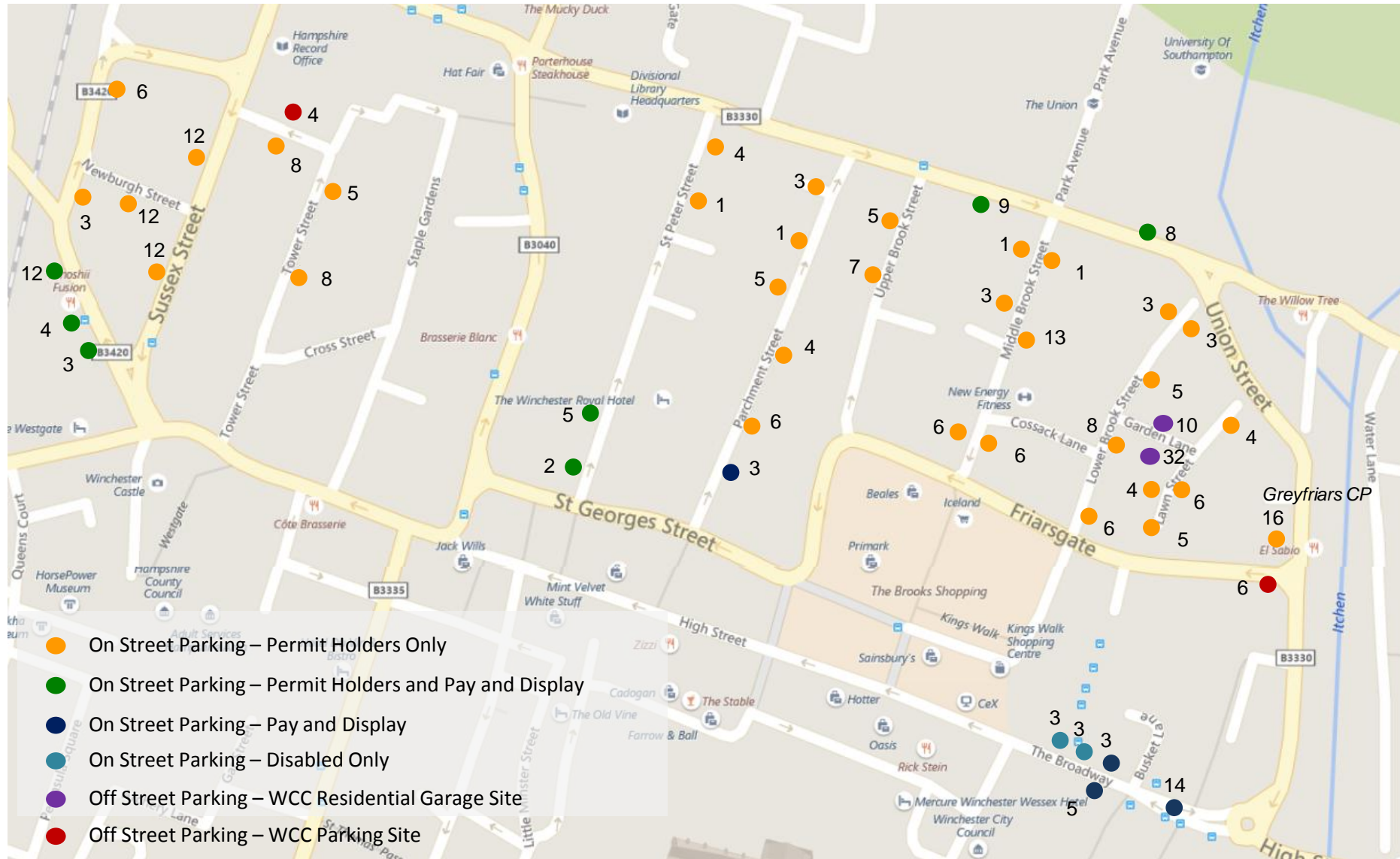
Winchester
City Council

On street charging

- At this time it is estimated that eight 3kW on-street chargers will be required within the AQMA over the next five to ten years.
- The Councils policy regarding the charger provision and power charges is not clear at this time. We therefore propose that a small pilot project of just 3 points is implemented to demonstrate the technology and raise awareness.
- Following the pilot project, the charging point rollout can be driven by user demand.



AQMA on street parking bays (280 Off)



AQMA Feeder road parking bays (86 Off)

